

ATP6AP1 polyclonal antibody

Catalog: BS6251

Host: Rabbit

Reactivity: Human, Mouse

BackGround:

ATP6AP1 (ATPase, H⁺ transporting, lysosomal accessory protein 1), also known as 16A, CF2, Ac45, XAP3, ATP6S1, VATPS1 (vacuolar ATP synthase S1 accessory protein) or ATP6IP1, is a type I transmembrane, V-ATPase accessory protein that is predominantly expressed in endocrine and neuronal cells. ATP6AP1 is responsible for targeting the V-ATPase enzyme to specialized complex vacuolar systems. Via its cytoplasmic tail, ATP6AP1 interacts with subunits of the V0 domain. The disruption of this interaction in osteoclasts results in impaired bone resorption, suggesting an important role for ATP6AP1 in proper osteoclastic bone resorption.

Product:

1mg/ml in PBS with 0.1% Sodium Azide, 50% Glycerol.

Molecular Weight:

~ 52 kDa

Swiss-Prot:

Q15904

Purification&Purity:

The antibody was affinity-purified from rabbit antiserum by affinity-chromatography using epitope-specific immunogen and the purity is > 95% (by SDS-PAGE).

Applications:

WB 1:500 - 1:2000

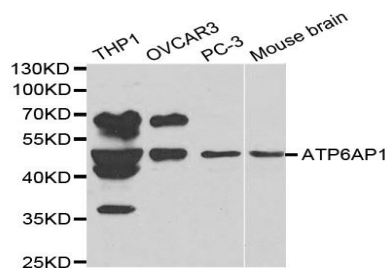
Storage&Stability:

Store at 4 °C short term. Aliquot and store at -20 °C long term. Avoid freeze-thaw cycles.

Specificity:

ATP6AP1 polyclonal antibody detects endogenous levels of ATP6AP1 protein.

DATA:



WesternBlot (WB) analysis of ATP6AP1 polyclonal antibody

Note:

For research use only, not for use in diagnostic procedure.

Bioworld Technology, Inc.

Add: 1660 South Highway 100, Suite 500 St. Louis Park, MN 55416, USA.

Email: info@bioworld.com

Tel: 6123263284

Fax: 6122933841

Bioworld technology, co. Ltd.

Add: No 9, weidi road Qixia District Nanjing, 210046, P. R. China.

Email: info@biogol.com

Tel: 0086-025-68037686

Fax: 0086-025-68035151