

## Sugen Kinase 269 polyclonal antibody

Catalog: BS62506

Host: Rabbit

Reactivity: Human, Mouse

### BackGround:

PEAK1 (Pseudopodium-enriched atypical kinase 1 or sgk269) is a member of nonreceptor atypical tyrosine kinase family identified by MS analysis of purified pseudopodium. PEAK1 is a multi-domain protein with a N-terminal Erk binding site, followed by actin-targeting/Src substrate/Erk substrate region, Crk binding site, Shc binding site, and a C-terminal kinase domain. By interacting with different adaptors like Shc, Grb2, Src, and others, PEAK1 functions as an important regulator in different signaling pathways, namely the Src/PEAK1/ErbB2, EGFR Shc1/PEAK1/Grb2, TGF $\beta$ /PEAK1/Src/MAPK, and fibronectin/PEAK1/Src pathways. PEAK1 plays an instrumental role in a wide variety of biological processes including epithelial-mesenchymal transition (EMT), dynamics of focal adhesion, cancer metastatic growth and invasion as well as cancer drug resistance. Phosphorylation of PEAK1 at Tyr665 or Tyr635 by SFK (Src family Kinases) has been shown to be essential for cancer cell migration and invasion as well as the turnover of focal adhesions.

### Product:

Rabbit IgG, 1mg/ml in PBS with 0.02% sodium azide, 50% glycerol, pH7.2

### Molecular Weight:

~ 193 kDa

### Swiss-Prot:

Q9H792

### Purification&Purity:

The antibody was affinity-purified from rabbit antiserum by affinity-chromatography using epitope-specific immunogen and the purity is > 95% (by SDS-PAGE).

### Applications:

WB:1:500~1:1000

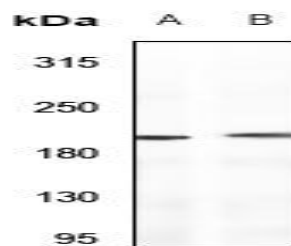
### Storage&Stability:

Store at 4 °C short term. Aliquot and store at -20 °C long term. Avoid freeze-thaw cycles.

### Specificity:

Sugen Kinase 269 polyclonal antibody detects endogenous levels of Sugén Kinase 269 protein.

### DATA:



Western blot (WB) analysis of Sugén Kinase 269 polyclonal antibody at 1:500 dilution

LaneA:HEK293T whole cell lysate

LaneB:L02 whole cell lysate

### Note:

For research use only, not for use in diagnostic procedure.

### Bioworld Technology, Inc.

Add: 1660 South Highway 100, Suite 500 St. Louis Park, MN 55416, USA.

Email: [info@bioworld.com](mailto:info@bioworld.com)

Tel: 6123263284

Fax: 6122933841

### Bioworld technology, co. Ltd.

Add: No 9, weidi road Qixia District Nanjing, 210046, P. R. China.

Email: [info@biogot.com](mailto:info@biogot.com)

Tel: 0086-025-68037686

Fax: 0086-025-68035151