

## TIGD3 polyclonal antibody

Catalog: BS62496

Host: Rabbit

Reactivity: Human,Mouse,Rat

### BackGround:

The protein encoded by this gene belongs to the tiger subfamily of the pogo superfamily of DNA-mediated transposons in humans. These proteins are related to DNA transposons found in fungi and nematodes, and more distantly to the Tc1 and mariner transposases. They are also very similar to the major mammalian centromere protein B. The exact function of this gene is not known.

### Product:

Rabbit IgG, 1mg/ml in PBS with 0.02% sodium azide, 50% glycerol, pH7.2

### Molecular Weight:

~ 55 kDa

### Swiss-Prot:

Q6B0B8

### Purification&Purity:

The antibody was affinity-purified from rabbit antiserum by affinity-chromatography using epitope-specific immunogen and the purity is > 95% (by SDS-PAGE).

### Applications:

WB:1:500~1:1000 IHC:1:50~1:200

### Storage&Stability:

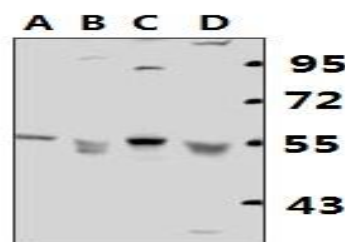
Store at 4 °C short term. Aliquot and store at -20 °C long

term. Avoid freeze-thaw cycles.

### Specificity:

TIGD3 polyclonal antibody detects endogenous levels of TIGD3 protein.

### DATA:



Western blot (WB) analysis of TIGD3 polyclonal antibody at 1:500 dilution

LaneA:PC12 whole cell lysate

LaneB:BV2 whole cell lysate

LaneC:COS-7 whole cell lysate

LaneD:Hela whole cell lysate

### Note:

For research use only, not for use in diagnostic procedure.

### Bioworld Technology, Inc.

Add: 1660 South Highway 100, Suite 500 St. Louis Park, MN 55416,USA.

Email: [info@bioworld.com](mailto:info@bioworld.com)

Tel: 6123263284

Fax: 6122933841

### Bioworld technology, co. Ltd.

Add: No 9, weidi road Qixia District Nanjing, 210046, P. R. China.

Email: [info@biogot.com](mailto:info@biogot.com)

Tel: 0086-025-68037686

Fax: 0086-025-68035151