

SH3GLB2 polyclonal antibody

Catalog: BS62482

Host: Rabbit

Reactivity: Human,Mouse,Rat

BackGround:

The Endophilins comprise a family of proteins that associate with Amphiphysin, Synaptojanin and Dynamin and are implicated in presynaptic vesicle trafficking at nerve terminals. The expression patterns of the Endophilins are consistent with their cellular functions at the neuronal synapse. Endophilin B1 is a member of the B subgroup of the Endophilin family that is required for maintenance of mitochondrial morphology and for the regulation of the outer mitochondrial membrane dynamics. Endophilin B2 is also a member of the Endophilin B subgroup that is ubiquitously expressed but shows highest levels in brain, adult lung, ovary, and spinal cord. Decreased levels of Endophilin B2 are found in Down Syndrome and may reflect brain dysgenesis.

Product:

Rabbit IgG, 1mg/ml in PBS with 0.02% sodium azide, 50% glycerol, pH7.2

Molecular Weight:

~ 44 kDa

Swiss-Prot:

Q9NR46

Purification&Purity:

The antibody was affinity-purified from rabbit antiserum by affinity-chromatography using epitope-specific immunogen and the purity is > 95% (by SDS-PAGE).

Applications:

WB:1:500~1:1000 IHC:1:50~1:200

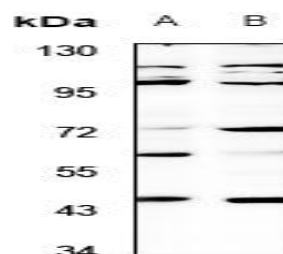
Storage&Stability:

Store at 4 °C short term. Aliquot and store at -20 °C long term. Avoid freeze-thaw cycles.

Specificity:

SH3GLB2 polyclonal antibody detects endogenous levels of SH3GLB2 protein.

DATA:



Western blot (WB) analysis of SH3GLB2 polyclonal antibody at 1:500 dilution

LaneA:BV2 whole cell lysate

LaneB:PC12 whole cell lysate

Note:

For research use only, not for use in diagnostic procedure.

Bioworld Technology, Inc.

Add: 1660 South Highway 100, Suite 500 St. Louis Park, MN 55416,USA.

Email: info@bioworld.com

Tel: 6123263284

Fax: 6122933841

Bioworld technology, co. Ltd.

Add: No 9, weidi road Qixia District Nanjing, 210046, P. R. China.

Email: info@biogot.com

Tel: 0086-025-68037686

Fax: 0086-025-68035151