

CSP polyclonal antibody

Catalog: BS62356

Host: Rabbit

Reactivity: Human,Mouse,Rat

BackGround:

This gene is a member of the J protein family. J proteins function in many cellular processes by regulating the ATPase activity of 70 kDa heat shock proteins. The encoded protein plays a role in membrane trafficking and protein folding, and has been shown to have anti-neurodegenerative properties. The encoded protein is known to play a role in cystic fibrosis and Huntington's disease. A pseudogene of this gene is located on the short arm of chromosome 8.

Product:

Rabbit IgG, 1mg/ml in PBS with 0.02% sodium azide, 50% glycerol, pH7.2

Molecular Weight:

~ 34 kDa

Swiss-Prot:

Q9H3Z4

Purification&Purity:

The antibody was affinity-purified from rabbit antiserum by affinity-chromatography using epitope-specific immunogen and the purity is > 95% (by SDS-PAGE).

Applications:

WB:1:500~1:1000

Storage&Stability:

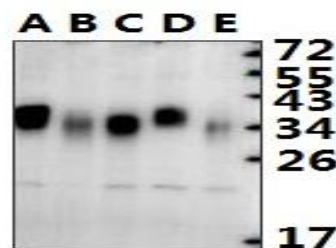
Store at 4 °C short term. Aliquot and store at -20 °C long

term. Avoid freeze-thaw cycles.

Specificity:

CSP polyclonal antibody detects endogenous levels of CSP protein.

DATA:



Western blot (WB) analysis of CSP polyclonal antibody at 1:500 dilution

LaneA:AML-12 whole cell lysate

LaneB:PMVEC whole cell lysate

LaneC:A549 whole cell lysate

LaneD:L02 whole cell lysate

LaneE:H1792 whole cell lysate

Note:

For research use only, not for use in diagnostic procedure.

Bioworld Technology, Inc.

Add: 1660 South Highway 100, Suite 500 St. Louis Park, MN 55416,USA.

Email: info@bioworld.com

Tel: 6123263284

Fax: 6122933841

Bioworld technology, co. Ltd.

Add: No 9, weidi road Qixia District Nanjing, 210046, P. R. China.

Email: info@biogot.com

Tel: 0086-025-68037686

Fax: 0086-025-68035151