

POLR3E polyclonal antibody

Catalog: BS62354

Host: Rabbit

Reactivity: Human, Mouse, Rat

BackGround:

Eukaryotes produce 3 distinct classes of RNA polymerase, Pol I, II and III. Each polymerase is responsible for the synthesis of a different class of RNA. RNA polymerase III (Pol III) transcribes the 5S rRNA genes and all of the tRNA (transfer RNA) genes. POLR3E, also known as DNA-directed RNA polymerase III subunit RPC5, is a 708 amino acid nuclear protein that is one of the 17 subunits that comprise Pol III. Specifically, POLR3E is a DNA-dependent RNA polymerase that uses the four ribonucleoside triphosphates to catalyze the transcription of DNA to RNA. The gene encoding POLR3K maps to human chromosome 16, which encodes over 900 genes in approximately 90 million base pairs and is associated with a variety of genetic disorders.

Product:

Rabbit IgG, 1mg/ml in PBS with 0.02% sodium azide, 50% glycerol, pH7.2

Molecular Weight:

~ 73 kDa

Swiss-Prot:

Q9NVU0

Purification&Purity:

The antibody was affinity-purified from rabbit antiserum by affinity-chromatography using epitope-specific immunogen and the purity is > 95% (by SDS-PAGE).

Applications:

WB:1:500~1:1000 IHC:1:50~1:200 IF:1:50~1:200

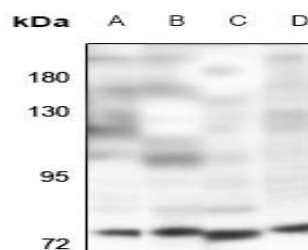
Storage&Stability:

Store at 4 °C short term. Aliquot and store at -20 °C long term. Avoid freeze-thaw cycles.

Specificity:

POLR3E polyclonal antibody detects endogenous levels of POLR3E protein.

DATA:



Western blot (WB) analysis of POLR3E polyclonal antibody at 1:500 dilution

LaneA:K562 whole cell lysate

LaneB:HEK293T whole cell lysate

LaneC:AML-12 whole cell lysate

LaneD:H9C2 whole cell lysate

Note:

For research use only, not for use in diagnostic procedure.

Bioworld Technology, Inc.

Add: 1660 South Highway 100, Suite 500 St. Louis Park, MN 55416, USA.

Email: info@bioworld.com

Tel: 6123263284

Fax: 6122933841

Bioworld technology, co. Ltd.

Add: No 9, weidi road Qixia District Nanjing, 210046, P. R. China.

Email: info@biogot.com

Tel: 0086-025-68037686

Fax: 0086-025-68035151