

ATG4A polyclonal antibody

Catalog: BS62343

Host: Rabbit

Reactivity: Human,Mouse,Rat

BackGround:

Autophagy, a process that results in the lysosomal-dependent degradation of cytosolic compartments, is carried out by the autophagosome, which is a double-membrane vesicle whose formation is catalyzed by several autophagy-related gene (Atg) proteins. Atg4a (ATG4 autophagy related 4 homolog A), also known as APG4A or AUTL2, is a 398 amino acid protein that localizes to the cytoplasm and belongs to the peptidase C54 family. Expressed in a variety of tissues, including brain, skeletal muscle and fetal liver, Atg4a functions as a cysteine protease that cleaves the C-terminal part of target proteins, such as GABARAP and MAP1LC3, and plays an essential role in autophagy. Atg4a exists as multiple alternatively spliced isoforms and is functionally inhibited by N-ethylmaleimide.

Product:

Rabbit IgG, 1mg/ml in PBS with 0.02% sodium azide, 50% glycerol, pH7.2

Molecular Weight:

~ 60 kDa

Swiss-Prot:

Q8WYN0

Purification&Purity:

The antibody was affinity-purified from rabbit antiserum by affinity-chromatography using epitope-specific immunogen and the purity is > 95% (by SDS-PAGE).

Applications:

WB:1:500~1:1000 IHC:1:50~1:200 IF:1:50~1:200

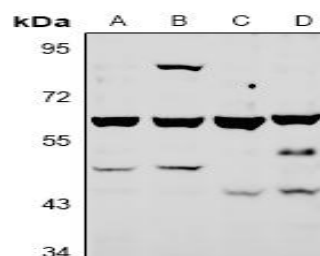
Storage&Stability:

Store at 4 °C short term. Aliquot and store at -20 °C long term. Avoid freeze-thaw cycles.

Specificity:

ATG4A polyclonal antibody detects endogenous levels of ATG4A protein.

DATA:



Western blot (WB) analysis of ATG4A polyclonal antibody at 1:500 dilution

LaneA:HCT116 whole cell lysate

LaneB:HepG2 whole cell lysate

LaneC:CT26 whole cell lysate

LaneD:PC12 whole cell lysate

Note:

For research use only, not for use in diagnostic procedure.

Bioworld Technology, Inc.

Add: 1660 South Highway 100, Suite 500 St. Louis Park, MN 55416,USA.

Email: info@bioworld.com

Tel: 6123263284

Fax: 6122933841

Bioworld technology, co. Ltd.

Add: No 9, weidi road Qixia District Nanjing, 210046, P. R. China.

Email: info@biogot.com

Tel: 0086-025-68037686

Fax: 0086-025-68035151