

## CLASP1 polyclonal antibody

Catalog: BS62340

Host: Rabbit

Reactivity: Human,Mouse,Rat

### BackGround:

Members of the CLASP family, including CLASP1, are mammalian microtubule plus-end binding proteins that interact with CLIPs in order to stabilize the microtubule structures in transfected cells. CLASP1 localizes near the distal end of growing spindle microtubules during mitosis and is a component of the outer corona region of kinetochores. CLASP proteins stabilize microtubules by promoting pauses and restricting MT growth. Defects in CLASP1 cause collapse of the spindle, attachment of kinetochores to short microtubules, and other abnormal mitotic behaviors.

### Product:

Rabbit IgG, 1mg/ml in PBS with 0.02% sodium azide, 50% glycerol, pH7.2

### Molecular Weight:

~ 169 kDa

### Swiss-Prot:

Q7Z460

### Purification&Purity:

The antibody was affinity-purified from rabbit antiserum by affinity-chromatography using epitope-specific immunogen and the purity is > 95% (by SDS-PAGE).

### Applications:

WB:1:500~1:1000 IHC:1:50~1:200

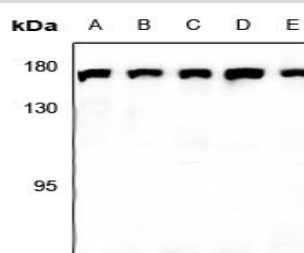
### Storage&Stability:

Store at 4 °C short term. Aliquot and store at -20 °C long term. Avoid freeze-thaw cycles.

### Specificity:

CLASP1 polyclonal antibody detects endogenous levels of CLASP1 protein.

### DATA:



Western blot (WB) analysis of CLASP1 polyclonal antibody at 1:500 dilution

LaneA:PC12 whole cell lysate

LaneB:AML-12 whole cell lysate

LaneC:HEK293T whole cell lysate

LaneD:L02 whole cell lysate

LaneE:A549 whole cell lysate

### Note:

For research use only, not for use in diagnostic procedure.

### Bioworld Technology, Inc.

Add: 1660 South Highway 100, Suite 500 St. Louis Park, MN 55416,USA.

Email: [info@bioworld.com](mailto:info@bioworld.com)

Tel: 6123263284

Fax: 6122933841

### Bioworld technology, co. Ltd.

Add: No 9, weidi road Qixia District Nanjing, 210046, P. R. China.

Email: [info@biogot.com](mailto:info@biogot.com)

Tel: 0086-025-68037686

Fax: 0086-025-68035151