

Claudin 19 polyclonal antibody

Catalog: BS62338

Host: Rabbit

Reactivity: Human

BackGround:

The claudin superfamily consists of many structurally related proteins in humans. These proteins are important structural and functional components of tight junctions in paracellular transport. Claudins are located in both epithelial and endothelial cells in all tight junction-bearing tissues. Three classes of proteins are known to localize to tight junctions, including the claudins, Occludin and junction adhesion molecules. Claudins, which consist of four transmembrane domains and two extracellular loops, make up tight junction strands. Claudin expression is often highly restricted to specific regions of different tissues and may have an important role in transcellular transport through tight junctions. Claudin-19 is a 224 amino acid multi-pass membrane protein that belongs to the claudin family and is expressed as two isoforms due to alternative splicing events. Defects in the gene encoding claudin-19 are the cause of hypomagnesemia renal with ocular involvement (HOMGO), a renal disease characterized by hypomagnesemia, hypercalciuria and nephrocalcinosis.

Product:

Rabbit IgG, 1mg/ml in PBS with 0.02% sodium azide, 50% glycerol, pH7.2

Molecular Weight:

~ 21 kDa

Swiss-Prot:

Q8N6F1

Purification&Purity:

The antibody was affinity-purified from rabbit antiserum by affinity-chromatography using epitope-specific immunogen and the purity is > 95% (by SDS-PAGE).

Applications:

WB:1:500~1:1000

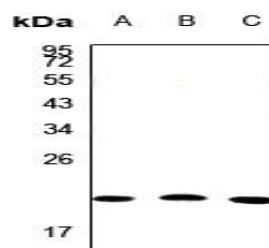
Storage&Stability:

Store at 4 °C short term. Aliquot and store at -20 °C long term. Avoid freeze-thaw cycles.

Specificity:

Claudin 19 polyclonal antibody detects endogenous levels of Claudin 19 protein.

DATA:



Western blot (WB) analysis of Claudin 19 polyclonal antibody at 1:500 dilution

LaneA:L02 whole cell lysate

LaneB:HEK293T whole cell lysate

LaneC:A549 whole cell lysate

Note:

For research use only, not for use in diagnostic procedure.

Bioworld Technology, Inc.

Add: 1660 South Highway 100, Suite 500 St. Louis Park, MN 55416, USA.

Email: info@bioworld.com

Tel: 6123263284

Fax: 6122933841

Bioworld technology, co. Ltd.

Add: No 9, weidi road Qixia District Nanjing, 210046, P. R. China.

Email: info@biogot.com

Tel: 0086-025-68037686

Fax: 0086-025-68035151