

CDYL2 polyclonal antibody

Catalog: BS62337

Host: Rabbit

Reactivity: Human,Mouse,Rat

BackGround:

CDY is a gene family expressed exclusively in the testis that localizes to a region of the Y chromosome frequently deleted in infertile males. CDY proteins contain two functional domains, an N-terminal chromodomain, possibly functioning in heterochromatin interactions, and a C-terminal domain, which resembles enoyl-CoA-isomerase, a protein involved in fatty acid oxidation. Furthermore, CDY proteins act as histone acetyltransferases with strong preference for Histone H4, a process required for the histone to proamine transition in spermatogenesis, consistent with the association with male infertility. Chromodomain Y-like protein 2 (CDYL2) is a related nuclear protein that is ubiquitously expressed with moderate levels in most tissues. The gene encoding CDYL2 is located on chromosome 16.

Product:

Rabbit IgG, 1mg/ml in PBS with 0.02% sodium azide, 50% glycerol, pH7.2

Molecular Weight:

~ 57 kDa

Swiss-Prot:

Q8N8U2

Purification&Purity:

The antibody was affinity-purified from rabbit antiserum by affinity-chromatography using epitope-specific immunogen and the purity is > 95% (by SDS-PAGE).

Applications:

WB:1:500~1:1000 IHC:1:50~1:200 ICC:1:50~1:200

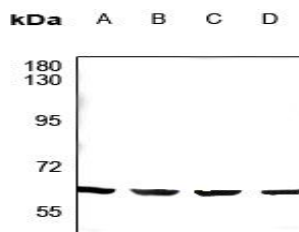
Storage&Stability:

Store at 4 °C short term. Aliquot and store at -20 °C long term. Avoid freeze-thaw cycles.

Specificity:

CDYL2 polyclonal antibody detects endogenous levels of CDYL2 protein.

DATA:



Western blot (WB) analysis of CDYL2 polyclonal antibody at 1:500 dilution

LaneA:CT26 whole cell lysate

LaneB:PC12 whole cell lysate

LaneC:Hela whole cell lysate

LaneD:PC3 whole cell lysate

Note:

For research use only, not for use in diagnostic procedure.

Bioworld Technology, Inc.

Add: 1660 South Highway 100, Suite 500 St. Louis Park, MN 55416,USA.

Email: info@bioworld.com

Tel: 6123263284

Fax: 6122933841

Bioworld technology, co. Ltd.

Add: No 9, weidi road Qixia District Nanjing, 210046, P. R. China.

Email: info@biogot.com

Tel: 0086-025-68037686

Fax: 0086-025-68035151