

CLIC4 polyclonal antibody

Catalog: BS62334

Host: Rabbit

Reactivity: Human,Mouse,Rat

BackGround:

CLIC4 (chloride intracellular channel 4), also known as H1, huH1, p64H1, CLIC4L or MTCLIC, is a 253 amino acid single-pass membrane protein that localizes to both nucleus and cytoplasm and contains one GST C-terminal domain. Expressed in placenta, heart and skeletal muscle, as well as in epithelial cells from kidney, colon and esophageal tissue, CLIC4 functions as a monomer that is able to form selective ion channels in target proteins, thereby facilitating the transport of chloride and other ions.

Product:

Rabbit IgG, 1mg/ml in PBS with 0.02% sodium azide, 50% glycerol, pH7.2

Molecular Weight:

~ 29 kDa

Swiss-Prot:

Q9Y696

Purification&Purity:

The antibody was affinity-purified from rabbit antiserum by affinity-chromatography using epitope-specific immunogen and the purity is > 95% (by SDS-PAGE).

Applications:

WB:1:500~1:1000 IHC:1:50~1:200

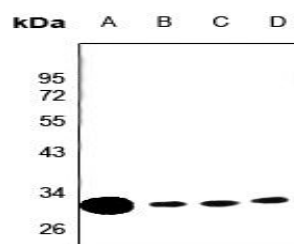
Storage&Stability:

Store at 4 °C short term. Aliquot and store at -20 °C long term. Avoid freeze-thaw cycles.

Specificity:

CLIC4 polyclonal antibody detects endogenous levels of CLIC4 protein.

DATA:



Western blot (WB) analysis of CLIC4 polyclonal antibody at 1:500 dilution

LaneA: COS-7 whole cell lysate

LaneB: LOVO whole cell lysate

LaneC: CT26 whole cell lysate

LaneD: PC12 whole cell lysate

Note:

For research use only, not for use in diagnostic procedure.

Bioworld Technology, Inc.

Add: 1660 South Highway 100, Suite 500 St. Louis Park, MN 55416, USA.

Email: info@bioworld.com

Tel: 6123263284

Fax: 6122933841

Bioworld technology, co. Ltd.

Add: No 9, weidi road Qixia District Nanjing, 210046, P. R. China.

Email: info@biogot.com

Tel: 0086-025-68037686

Fax: 0086-025-68035151