



CEP76 polyclonal antibody

Catalog: BS62332

Host: Rabbit

Reactivity: Human, Mouse, Rat

BackGround:

Centrosomes are the major microtubule-organizing centers of mammalian cells. They are composed of a centriole pair and surrounding microtubule-nucleating material termed pericentriolar material (PCM). Bipolar mitotic spindle assembly relies on two intertwined processes: centriole duplication and centrosome maturation. Failure to properly orchestrate centrosome duplication and maturation is subsequently linked to spindle defects, which can result in aneuploidy and promote cancer progression. The CEP76 (centrosomal protein of 76 kDa) gene encodes a protein of 659 amino acids. The CEP76 protein is homologous among several species including human, mouse, rat and xenopus, suggesting a conserved function.

Product:

Rabbit IgG, 1mg/ml in PBS with 0.02% sodium azide, 50% glycerol, pH7.2

Molecular Weight:

~ 76 kDa

Swiss-Prot:

Q8TAP6

Purification&Purity:

The antibody was affinity-purified from rabbit antiserum by affinity-chromatography using epitope-specific immunogen and the purity is > 95% (by SDS-PAGE).

Applications:

WB:1:500~1:1000 IHC:1:50~1:200

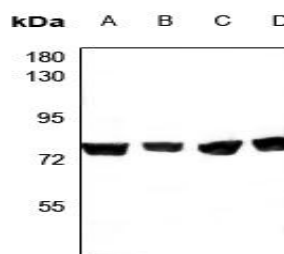
Storage&Stability:

Store at 4 °C short term. Aliquot and store at -20 °C long term. Avoid freeze-thaw cycles.

Specificity:

CEP76 polyclonal antibody detects endogenous levels of CEP76 protein.

DATA:



Western blot (WB) analysis of CEP76 polyclonal antibody at 1:500 dilution

LaneA: COS-7 whole cell lysate

LaneB: PC3 whole cell lysate

LaneC: CT26 whole cell lysate

LaneD: PC12 whole cell lysate

Note:

For research use only, not for use in diagnostic procedure.

Bioworld Technology, Inc.

Add: 1660 South Highway 100, Suite 500 St. Louis Park, MN 55416, USA.

Email: info@bioworld.com

Tel: 6123263284

Fax: 6122933841

Bioworld technology, co. Ltd.

Add: No 9, weidi road Qixia District Nanjing, 210046, P. R. China.

Email: info@biogol.com

Tel: 0086-025-68037686

Fax: 0086-025-68035151