

CEACAM21 polyclonal antibody

Catalog: BS62324

Host: Rabbit

Reactivity: Human, Mouse, Rat

BackGround:

Carcinoembryonic antigen (CEA) is one of the most commonly used tumor markers in serum immunoassay determinations of carcinoma. Members of the CEACAM (carcinoembryonic antigen-related cell adhesion molecule) family contain a single N domain, with structural homology to the immunoglobulin variable domains, followed by a variable number of immunoglobulin constant-like A and/or B domains. CEACAM21 (carcinoembryonic antigen-related cell adhesion molecule 21) is a 293 amino acid single-pass type I membraneprotein that belongs to the CEACAM family and contains one Ig-like C2-type domain. CEACAM21 exists as three alternatively spliced isoforms that are encoded by a gene which maps to human chromosome 19.

Product:

Rabbit IgG, 1mg/ml in PBS with 0.02% sodium azide, 50% glycerol, pH7.2

Molecular Weight:

~ 32 kDa

Swiss-Prot:

Q3KPI0

Purification&Purity:

The antibody was affinity-purified from rabbit antiserum by affinity-chromatography using epitope-specific immunogen and the purity is > 95% (by SDS-PAGE).

Applications:

WB: 1:500~1:1000

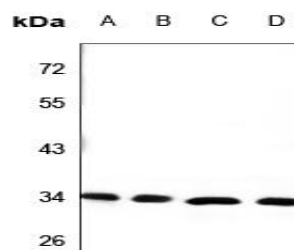
Storage&Stability:

Store at 4 °C short term. Aliquot and store at -20 °C long term. Avoid freeze-thaw cycles.

Specificity:

CEACAM21 polyclonal antibody detects endogenous levels of CEACAM21 protein.

DATA:



Western blot (WB) analysis of CEACAM21 polyclonal antibody at 1:500 dilution

Lane A: CT26 whole cell lysate

Lane B: PC12 whole cell lysate

Lane C: A549 whole cell lysate

Lane D: MCF-7 whole cell lysate

Note:

For research use only, not for use in diagnostic procedure.

Bioworld Technology, Inc.

Add: 1660 South Highway 100, Suite 500 St. Louis Park, MN 55416, USA.

Email: info@bioworld.com

Tel: 6123263284

Fax: 6122933841

Bioworld technology, co. Ltd.

Add: No 9, weidi road Qixia District Nanjing, 210046, P. R. China.

Email: info@biogot.com

Tel: 0086-025-68037686

Fax: 0086-025-68035151