

## Arylsulfatase I polyclonal antibody

Catalog: BS62318

Host: Rabbit

Reactivity: Human

### BackGround:

Arylsulfatase I, displays arylsulfatase activity at neutral pH, when co-expressed with SUMF1; arylsulfatase activity is measured in the secretion medium of retinal cell line, but no activity is recorded when measured in cell extracts.

### Product:

Rabbit IgG, 1mg/ml in PBS with 0.02% sodium azide, 50% glycerol, pH7.2

### Molecular Weight:

~ 64 kDa

### Swiss-Prot:

Q5FYB1

### Purification&Purity:

The antibody was affinity-purified from rabbit antiserum by affinity-chromatography using epitope-specific immunogen and the purity is > 95% (by SDS-PAGE).

### Applications:

WB:1:500~1:1000 IHC:1:50~1:200 IF:1:50~1:200

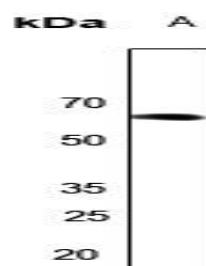
### Storage&Stability:

Store at 4 °C short term. Aliquot and store at -20 °C long term. Avoid freeze-thaw cycles.

### Specificity:

Arylsulfatase I polyclonal antibody detects endogenous levels of Arylsulfatase I protein.

### DATA:



Western blot (WB) analysis of Arylsulfatase I polyclonal antibody at 1:500 dilution

LaneA:Hela whole cell lysate

### Note:

For research use only, not for use in diagnostic procedure.

### Bioworld Technology, Inc.

Add: 1660 South Highway 100, Suite 500 St. Louis Park, MN 55416, USA.

Email: [info@bioworld.com](mailto:info@bioworld.com)

Tel: 6123263284

Fax: 6122933841

### Bioworld technology, co. Ltd.

Add: No 9, weidi road Qixia District Nanjing, 210046, P. R. China.

Email: [info@biogol.com](mailto:info@biogol.com)

Tel: 0086-025-68037686

Fax: 0086-025-68035151