

Cytochrome P450 2W1 polyclonal antibody

Catalog: BS62304

Host: Rabbit

Reactivity: Human

BackGround:

P450 enzymes constitute a family of monooxygenase enzymes that are involved in the metabolism of a wide array of endogenous and xenobiotic compounds. There are currently 57 known active cytochrome P450 (CYP) genes and 58 known pseudogenes present in the human genome. Several P450 enzymes have been classified by sequence similarities as members of the CYP1A and CYP2A subfamilies. CYP2W1 is a 490 amino acid protein that belongs to the CYP2 family of cytochrome P450 proteins. These proteins are usually involved in the metabolism of foreign compounds. CYP2W1 metabolizes arachidonic acid and catalyzes the oxidation of indole. CP2W1 represents a tumor-specific P450 isoform that is universally conserved in vertebrates and is a potential drug target in cancer therapeutics.

Product:

Rabbit IgG, 1mg/ml in PBS with 0.02% sodium azide, 50% glycerol, pH7.2

Molecular Weight:

~ 54 kDa

Swiss-Prot:

Q8TAV3

Purification&Purity:

The antibody was affinity-purified from rabbit antiserum

by affinity-chromatography using epitope-specific immunogen and the purity is > 95% (by SDS-PAGE).

Applications:

WB:1:500~1:1000 IHC:1:50~1:200 IF:1:50~1:200

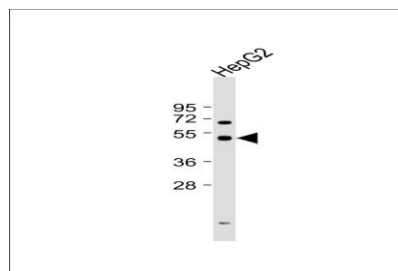
Storage&Stability:

Store at 4 °C short term. Aliquot and store at -20 °C long term. Avoid freeze-thaw cycles.

Specificity:

Cytochrome P450 2W1 polyclonal antibody detects endogenous levels of Cytochrome P450 2W1 protein.

DATA:



Western blot analysis of extracts of HepG2 cell line, using Cytochrome P450 2W1 polyclonal antibody.

Note:

For research use only, not for use in diagnostic procedure.

Bioworld Technology, Inc.

Add: 1660 South Highway 100, Suite 500 St. Louis Park, MN 55416, USA.

Email: info@bioworld.com

Tel: 6123263284

Fax: 6122933841

Bioworld technology, co. Ltd.

Add: No 9, weidi road Qixia District Nanjing, 210046, P. R. China.

Email: info@biogol.com

Tel: 0086-025-68037686

Fax: 0086-025-68035151