

## AATF polyclonal antibody

Catalog: BS62301

Host: Rabbit

Reactivity: Human

### BackGround:

Che-1 (protein AATF, apoptosis-antagonizing transcription factor) is a widely expressed nuclear protein that belongs to the AATF family. Hyperphosphorylated during the G1/S phase transition, Che-1 may function as a general inhibitor of the histone deacetylase HDAC1. Che-1 binding to the pocket region of Rb may displace HDAC1 from Rb/E2F complexes, leading to activation of E2F target genes and cell cycle progression. Displacement of HDAC1 from Sp1 bound to the p21 promoter leads to increased expression of Che-1. It also antagonizes PAR4 (prostate apoptosis response 4) mediated induction of aberrant amyloid peptide production in Alzheimer disease (AD; presenile and senile dementia). PAR4 is a leucine zipper protein that is pro-apoptotic and associated with neuronal degeneration in AD. Che-1 interaction with PAR4 suggests that it might directly or indirectly participate in regulation of PAR4 activity. Che-1 also co-localizes with PAR4 in both cytoplasmic and nuclear compartments, and it interacts directly and selectively with PAR4 via the leucine zipper domain in neural cells.

### Product:

Rabbit IgG, 1mg/ml in PBS with 0.02% sodium azide, 50% glycerol, pH7.2

### Molecular Weight:

~ 63 kDa

### Swiss-Prot:

Q9NY61

### Purification&Purity:

The antibody was affinity-purified from rabbit antiserum by affinity-chromatography using epitope-specific immunogen and the purity is > 95% (by SDS-PAGE).

### Applications:

WB:1:500~1:1000 IHC:1:50~1:200 IF:1:50~1:200

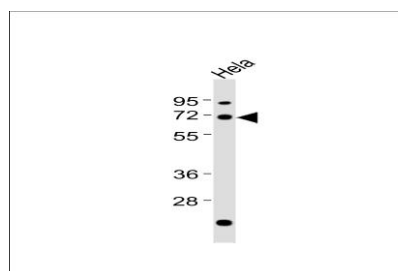
### Storage&Stability:

Store at 4 °C short term. Aliquot and store at -20 °C long term. Avoid freeze-thaw cycles.

### Specificity:

AATF polyclonal antibody detects endogenous levels of AATF protein.

### DATA:



Western blot analysis of extracts of Hela cell line, using AATF polyclonal antibody.

### Note:

For research use only, not for use in diagnostic procedure.

### Bioworld Technology, Inc.

Add: 1660 South Highway 100, Suite 500 St. Louis Park, MN 55416, USA.

Email: [info@bioworld.com](mailto:info@bioworld.com)

Tel: 6123263284

Fax: 6122933841

### Bioworld technology, co. Ltd.

Add: No 9, weidi road Qixia District Nanjing, 210046, P. R. China.

Email: [info@biogot.com](mailto:info@biogot.com)

Tel: 0086-025-68037686

Fax: 0086-025-68035151