

Calmodulin 1/2/3 polyclonal antibody

Catalog: BS6224

Host: Rabbit

Reactivity: Human, Mouse, Rat

BackGround:

This gene encodes a member of the EF-hand calcium-binding protein family. It is one of three genes which encode an identical calcium binding protein which is one of the four subunits of phosphorylase kinase. Two pseudogenes have been identified on chromosome 7 and X. Multiple transcript variants encoding different isoforms have been found for this gene.

Product:

Rabbit IgG, 1mg/ml in PBS with 0.02% sodium azide, 50% glycerol, pH7.2

Molecular Weight:

17KDa

Swiss-Prot:

P0DP23/P0DP24/P0DP25

Purification&Purity:

The antibody was affinity-purified from rabbit antiserum by affinity-chromatography using epitope-specific immunogen and the purity is > 95% (by SDS-PAGE).

Applications:

WB, 1:500 - 1:1000 | IHC, 1:100 - 1:200 | IF/ICC, 1:100 - 1:500

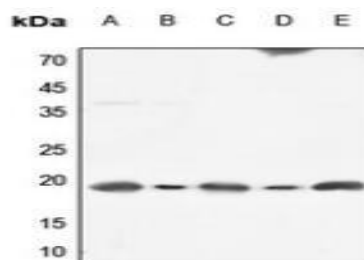
Storage&Stability:

Store at 4 °C short term. Aliquot and store at -20 °C long term. Avoid freeze-thaw cycles.

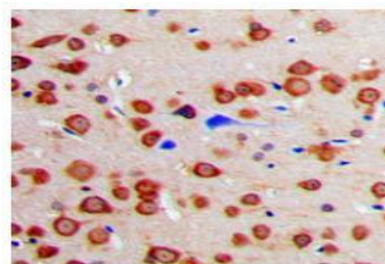
Specificity:

Calmodulin 1/2/3 polyclonal antibody detects endogenous levels of Calmodulin 1/2/3 protein.

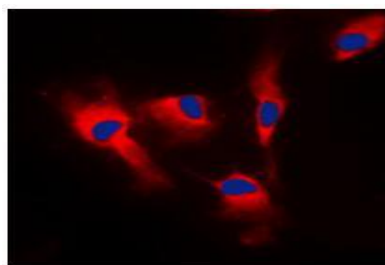
DATA:



Western blot analysis of Calmodulin 1/2/3 expression in HEK293T (A), Hela (B), mouse testis (C), mouse kidney (D), rat testis (E) whole cell lysates.



Immunohistochemical analysis of Calmodulin 1/2/3 staining in human brain formalin fixed paraffin embedded tissue section.



Immunofluorescent analysis of Calmodulin 1/2/3 staining in MCF7 cells.

Note:

For research use only, not for use in diagnostic procedure.

Bioworld Technology, Inc.

Add: 1660 South Highway 100, Suite 500 St. Louis Park, MN 55416, USA.

Email: info@bioworld.com

Tel: 6123263284

Fax: 6122933841

Bioworld technology, co. Ltd.

Add: No 9, weidi road Qixia District Nanjing, 210046, P. R. China.

Email: info@biogot.com

Tel: 0086-025-68037686

Fax: 0086-025-68035151