

SPHK1 polyclonal antibody

Catalog: BS6222

Host: Rabbit

Reactivity: Human, Mouse, Rat

BackGround:

Catalyzes the phosphorylation of sphingosine to form sphingosine 1-phosphate (SPP), a lipid mediator with both intra- and extracellular functions. Also acts on D-erythro-sphingosine and to a lesser extent sphinganine, but not other lipids, such as D,L-threo-dihydrosphingosine, N,N-dimethylsphingosine, diacylglycerol, ceramide, or phosphatidylinositol.

Product:

1mg/ml in PBS with 0.1% Sodium Azide, 50% Glycerol.

Molecular Weight:

~ 43 kDa

Swiss-Prot:

Q9NYA1

Purification&Purity:

The antibody was affinity-purified from rabbit antiserum by affinity-chromatography using epitope-specific immunogen and the purity is > 95% (by SDS-PAGE).

Applications:

WB: 1:500~1:2000

IHC/IF: 1:50~1:200

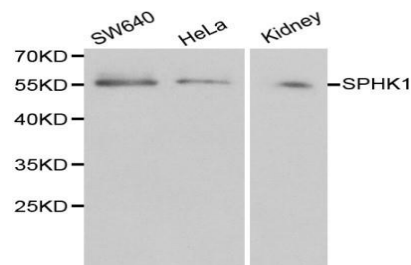
Storage&Stability:

Store at 4 °C short term. Aliquot and store at -20 °C long term. Avoid freeze-thaw cycles.

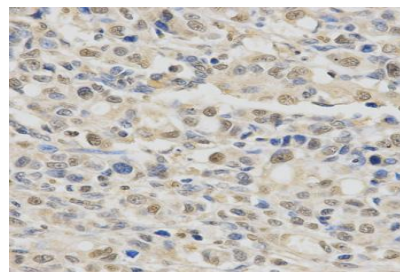
Specificity:

SPHK1 polyclonal antibody detects endogenous levels of SPHK1 protein.

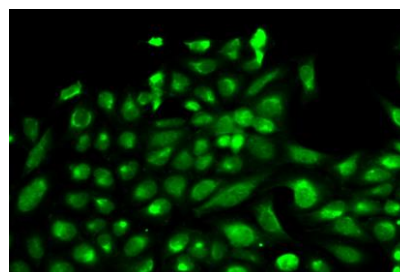
DATA:



WesternBlot (WB) analysis of SPHK1 polyclonal antibody in extracts from SW640, HeLa cells and mouse kidney tissue.



Immunohistochemistry (IHC) analysis of SPHK1 pAb in paraffin-embedded Human Stomach Cancer tissue.



Immunofluorescence analysis of HeLa cells, using SPHK1 polyclonal antibody

Note:

For research use only, not for use in diagnostic procedure.

Bioworld Technology, Inc.

Add: 1660 South Highway 100, Suite 500 St. Louis Park, MN 55416, USA.

Email: info@bioworld.com

Tel: 6123263284

Fax: 6122933841

Bioworld technology, co. Ltd.

Add: No 9, weidi road Qixia District Nanjing, 210046, P. R. China.

Email: info@biogot.com

Tel: 0086-025-68037686

Fax: 0086-025-68035151