

TNFSF18 polyclonal antibody

Catalog: BS61856

Host: Rabbit

Reactivity: Human, Mouse, Rat

BackGround:

GITRL (glucocorticoid-induced TNF-related ligand), a polypeptide encoded by a human umbilical endothelial cell cDNA, is a member of the TNF (tumor necrosis factor) superfamily. GITRL has a type 2 transmembrane topology that is characteristic of the TNF family. The TNF superfamilies regulate diverse biological functions, including cell proliferation, differentiation and survival. GITRL is found on vascular endothelial cells and in several peripheral tissues (small intestine, ovary, testis and kidney), where it may modulate T lymphocyte survival. The GTR receptor recognizes GITRL and the two interact to regulate NF κ B activation. The ligand-receptor pair of GITRL-GTR protects cells against AICD (activation-induced cell death).

Product:

1 mg/ml in Phosphate buffered saline (PBS) with 0.05% sodium azide, approx. pH 7.3.

Molecular Weight:

~ 22 kDa

Swiss-Prot:

Q9UNG2

Purification&Purity:

The antibody was affinity-purified from rabbit antiserum by affinity-chromatography using epitope-specific immunogen and the purity is > 95% (by SDS-PAGE).

Applications:

WB: 1:500~1:1000

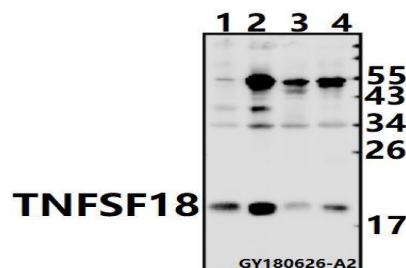
Storage&Stability:

Store at 4 °C short term. Aliquot and store at -20 °C long term. Avoid freeze-thaw cycles.

Specificity:

TNFSF18 pAb detects endogenous levels of TNFSF18 protein.

DATA:



Western blot (WB) analysis of TNFSF18 pAb at 1:1000 dilution

Lane1:SK-OVCAR3 whole cell lysate(40ug)

Lane2:HEK293T whole cell lysate(40ug)

Lane3:The Testis tissue lysate of Mouse(40ug)

Lane4:The Testis tissue lysate of Rat(40ug)

Note:

For research use only, not for use in diagnostic procedure.

Bioworld Technology, Inc.

Add: 1660 South Highway 100, Suite 500 St. Louis Park, MN 55416, USA.

Email: info@bioworld.com

Tel: 6123263284

Fax: 6122933841

Bioworld technology, co. Ltd.

Add: No 9, weidi road Qixia District Nanjing, 210046, P. R. China.

Email: info@biogol.com

Tel: 0086-025-68037686

Fax: 0086-025-68035151