

**CCZ1/CCZ1 B polyclonal antibody**

Catalog: BS61789

Host: Rabbit

Reactivity: Human

**BackGround:**

Acts in concert with MON1A, as a guanine exchange factor (GEF) for RAB7, promotes the exchange of GDP to GTP, converting it from an inactive GDP-bound form into an active GTP-bound form.

**Product:**

1 mg/ml in Phosphate buffered saline (PBS) with 0.05% sodium azide, approx. pH 7.3.

**Molecular Weight:**

~ 56 kDa

**Swiss-Prot:**

P86791; P86790

**Purification&Purity:**

The antibody was affinity-purified from mouse antiserum by affinity-chromatography using epitope-specific immunogen and the purity is > 95% (by SDS-PAGE).

**Applications:**

WB: 1:500~1:1000

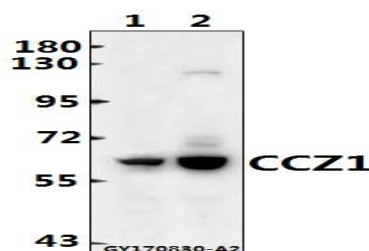
**Storage&Stability:**

Store at 4 °C short term. Aliquot and store at -20 °C long

term. Avoid freeze-thaw cycles.

**Specificity:**

CCZ1/CCZ1 B pAb detects endogenous levels of CCZ1 protein.

**DATA:**

Western blot (WB) analysis of CCZ1/CCZ1 B pAb at 1:500 dilution

Lane1:A549 whole cell lysate(40ug)

Lane2:HEK293T whole cell lysate(40ug)

**Note:**

For research use only, not for use in diagnostic procedure.

**Bioworld Technology, Inc.**

Add: 1660 South Highway 100, Suite 500 St. Louis Park,  
MN 55416, USA.

Email: [info@bioworld.com](mailto:info@bioworld.com)

Tel: 6123263284

Fax: 6122933841

**Bioworld technology, co. Ltd.**

Add: No 9, weidi road Qixia District Nanjing, 210046,  
P. R. China.

Email: [info@biogot.com](mailto:info@biogot.com)

Tel: 0086-025-68037686

Fax: 0086-025-68035151