

C1R polyclonal antibody

Catalog: BS61778

Host: Rabbit

Reactivity: Human, Mouse, Rat

BackGround:

The complement component proteins, C1, C3, C4, and C5, are potent anaphylatoxins that are released during complement activation. Binding of these proteins to their respective G protein-coupled receptors induces proinflammatory events, such as cellular degranulation, smooth muscle contraction, arachidonic acid metabolism, cytokine release, leukocyte activation, and cellular chemotaxis. C1q, together with proenzymes C1r and C1s, yield C1, the first component of the classical pathways of the serum complement system. C1 consists of a calcium dependent trimolecular complex of C1r, C1s and C1q in a 2:2:1 ratio. C1r is a dimer formed of two identical chains that are activated by cleavage into two chains, A and B.

Product:

1 mg/ml in Phosphate buffered saline (PBS) with 0.05% sodium azide, approx. pH 7.3.

Molecular Weight:

~ 80 kDa

Swiss-Prot:

P00736

Purification&Purity:

The antibody was affinity-purified from rabbit antiserum by affinity-chromatography using epitope-specific immunogen and the purity is > 95% (by SDS-PAGE).

Applications:

WB: 1:500~1:1000

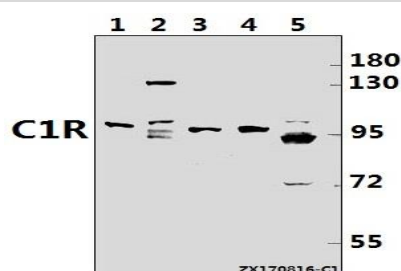
Storage&Stability:

Store at 4 °C short term. Aliquot and store at -20 °C long term. Avoid freeze-thaw cycles.

Specificity:

C1R pAb detects endogenous levels of C1R protein.

DATA:



Western blot (WB) analysis of C1R pAb at 1:500 dilution

Lane1:Hela whole cell lysate(40ug)

Lane2:HepG2 whole cell lysate(40ug)

Lane3:MEF whole cell lysate(40ug)

Lane4:C6 whole cell lysate(40ug)

Lane5:U-87MG whole cell lysate(40ug)

Note:

For research use only, not for use in diagnostic procedure.

Bioworld Technology, Inc.

Add: 1660 South Highway 100, Suite 500 St. Louis Park, MN 55416, USA.

Email: info@bioworld.com

Tel: 6123263284

Fax: 6122933841

Bioworld technology, co. Ltd.

Add: No 9, weidi road Qixia District Nanjing, 210046, P. R. China.

Email: info@biogot.com

Tel: 0086-025-68037686

Fax: 0086-025-68035151