

USP36 polyclonal antibody

Catalog: BS61769

Host: Rabbit

Reactivity: Human, Rat

BackGround:

Human USP36, encoding a DUB enzyme, was isolated from ovarian cancer cells using RT-PCR and characterized. Identified DUB enzyme activity of USP36 by analyzing its capability to cleave the ubiquitin. Structural and immunoprecipitation analyses revealed for the first time that USP36 contains the PEST motif and is polyubiquitinated.

Product:

1 mg/ml in Phosphate buffered saline (PBS) with 0.05% sodium azide, approx. pH 7.3.

Molecular Weight:

~ 122 kDa

Swiss-Prot:

Q9P275

Purification&Purity:

The antibody was affinity-purified from rabbit antiserum by affinity-chromatography using epitope-specific immunogen and the purity is > 95% (by SDS-PAGE).

Applications:

WB: 1:500~1:1000

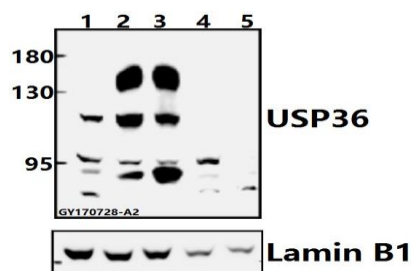
Storage&Stability:

Store at 4 °C short term. Aliquot and store at -20 °C long term. Avoid freeze-thaw cycles.

Specificity:

USP36 polyclonal antibody detects endogenous levels of USP36 protein.

DATA:



Western blot (WB) analysis of USP36 polyclonal antibody at 1:500 dilution

Lane1:MCF-7 whole cell lysate(40ug)

Lane2:HeLa whole cell lysate(40ug)

Lane3:PC12 whole cell lysate(40ug)

Lane4:3T3-L1 whole cell lysate(40ug)

Lane5:BV2 whole cell lysate(40ug)

Note:

For research use only, not for use in diagnostic procedure.

Bioworld Technology, Inc.

Add: 1660 South Highway 100, Suite 500 St. Louis Park, MN 55416, USA.

Email: info@bioworld.com

Tel: 6123263284

Fax: 6122933841

Bioworld technology, co. Ltd.

Add: No 9, weidi road Qixia District Nanjing, 210046, P. R. China.

Email: info@biogot.com

Tel: 0086-025-68037686

Fax: 0086-025-68035151