

## Cathepsin H polyclonal antibody

Catalog: BS61768

Host: Rabbit

Reactivity: Human, Mouse, Rat

### BackGround:

Cathepsin H (also designated N-benzoylarginine- $\beta$ -naphthylamide hydrolase, aleurain, cathepsin B3 or cathepsin BA) is a lysosomal cysteine proteinase that mediates degradation of lysosomal proteins. Cathepsin H is a disulfidelinked heavy and light chain dimer produced from a single precursor protein. The encoded protein, which belongs to the peptidase C1 protein family, can act both as an aminopeptidase and as an endopeptidase. Elevated levels of cathepsin H correlates with malignant progression of prostate tumors. Two transcript variants encoding different isoforms have been found for this gene. Full-length and truncated cathepsin H [12 amino acid deletion in the signal peptide region (CTSH $\Delta$ 10-21)] are expressed in prostate tissues, LNCaP, PC-3 and DU-145 prostate cancer cell lines. Cathepsin H mediates maturation of the biologically active surfactant protein-B (SP-B) peptide.

### Product:

1 mg/ml in Phosphate buffered saline (PBS) with 0.05% sodium azide, approx. pH 7.3.

### Molecular Weight:

~ 37 kDa

### Swiss-Prot:

P09668

### Purification&Purity:

The antibody was affinity-purified from rabbit antiserum by affinity-chromatography using epitope-specific immunogen and the purity is > 95% (by SDS-PAGE).

### Applications:

WB: 1:500~1:1000

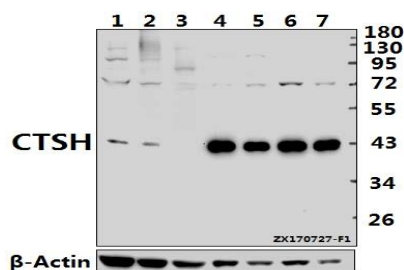
### Storage&Stability:

Store at 4 °C short term. Aliquot and store at -20 °C long term. Avoid freeze-thaw cycles.

### Specificity:

Cathepsin H polyclonal antibody detects endogenous levels of Cathepsin H protein.

### DATA:



Western blot (WB) analysis of Cathepsin H polyclonal antibody at 1:500 dilution

Lane1:CT26 whole cell lysate(40ug)

Lane2:PC12 whole cell lysate(40ug)

Lane3:AML-12 whole cell lysate(40ug)

Lane4:PC3 whole cell lysate(10ug)

Lane5:HepG2 whole cell lysate(10ug)

Lane6:A549 whole cell lysate(10ug)

Lane7:MCF-7 whole cell lysate(10ug)

### Note:

For research use only, not for use in diagnostic procedure.

### Bioworld Technology, Inc.

Add: 1660 South Highway 100, Suite 500 St. Louis Park, MN 55416, USA.

Email: [info@bioworld.com](mailto:info@bioworld.com)

Tel: 6123263284

Fax: 6122933841

### Bioworld technology, co. Ltd.

Add: No 9, weidi road Qixia District Nanjing, 210046, P. R. China.

Email: [info@biogol.com](mailto:info@biogol.com)

Tel: 0086-025-68037686

Fax: 0086-025-68035151