

## TUBA3C/TUBA3D/TUBA3E polyclonal antibody

Catalog: BS61748

Host: Rabbit

Reactivity: Human, Mouse, Rat

### BackGround:

Tubulin is a major cytoskeleton component that has five distinct forms, designated  $\alpha$ ,  $\beta$ ,  $\gamma$ ,  $\delta$  and  $\epsilon$  Tubulin.  $\alpha$  and  $\beta$  tubulins form heterodimers which multimerize to form a microtubule filament. There are 5  $\beta$  Tubulin isoforms ( $\beta 1$ ,  $\beta 2$ ,  $\beta 3$ ,  $\beta 4A$  and  $\beta 4B$ ) that are expressed in mammalian tissues.  $\beta 1$  and  $\beta 4$  are present throughout the cytosol,  $\beta 2$  is present in the nuclei and nucleoplasm, and  $\beta 3$  is a neuron-specific cytoskeletal protein.  $\gamma$  Tubulin forms the gammaosome, which is required for nucleating microtubule filaments at the centrosome. Both  $\delta$  Tubulin and  $\epsilon$  Tubulin are associated with the centrosome.  $\delta$  Tubulin is a homolog of the Chlamydomonas  $\delta$  Tubulin Uni3 and is found in association with the centrioles, whereas  $\epsilon$  Tubulin localizes to the pericentriolar material.  $\epsilon$  Tubulin exhibits a cell cycle-specific pattern of localization; first associating with only the older of the centrosomes in a newly duplicated pair, and later associating with both centrosomes.

### Product:

1 mg/ml in Phosphate buffered saline (PBS) with 0.05% sodium azide, approx. pH 7.4.

### Molecular Weight:

~ 55 kDa

### Swiss-Prot:

Q13748/Q6PEY2

### Purification&Purity:

The antibody was affinity-purified from rabbit antiserum by affinity-chromatography using epitope-specific immunogen and the purity is > 95% (by SDS-PAGE).

### Applications:

WB: 1:500~1:1000

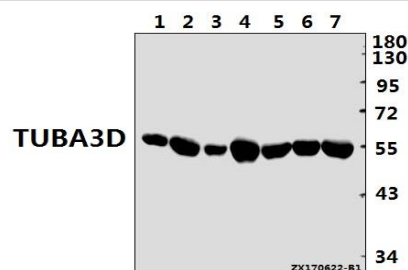
### Storage&Stability:

Store at 4 °C short term. Aliquot and store at -20 °C long term. Avoid freeze-thaw cycles.

### Specificity:

TUBA3C/TUBA3D/TUBA3E polyclonal antibody detects endogenous levels of TUBA3C/TUBA3D/TUBA3E protein.

### DATA:



Western blot (WB) analysis of TUBA3C/TUBA3D/TUBA3E polyclonal antibody at 1:500 dilution

Lane1: The Brain tissue lysate of Rat(40ug)

Lane2: The Brain tissue lysate of Mouse(40ug)

Lane3: THP-1 whole cell lysate(40ug)

Lane4: K562 whole cell lysate(40ug)

Lane5: HeLa whole cell lysate(40ug)

Lane6: The Testis tissue lysate of Rat(40ug)

Lane7: The Testis tissue lysate of Mouse(40ug)

### Note:

For research use only, not for use in diagnostic procedure.

### Bioworld Technology, Inc.

Add: 1660 South Highway 100, Suite 500 St. Louis Park, MN 55416, USA.

Email: [info@bioworld.com](mailto:info@bioworld.com)

Tel: 6123263284

Fax: 6122933841

### Bioworld technology, co. Ltd.

Add: No 9, weidi road Qixia District Nanjing, 210046, P. R. China.

Email: [info@biogol.com](mailto:info@biogol.com)

Tel: 0086-025-68037686

Fax: 0086-025-68035151