

CD200R1 polyclonal antibody

Catalog: BS61747

Host: Rabbit

Reactivity: Human, Mouse, Rat

BackGround:

OX2 (CD200, MOX2), a member of the immunoglobulin superfamily (IgSF), is a 248-residue cell surface glycoprotein that is expressed in lymphoid cells, neurons and endothelium. OX2 receptor (OX2R) is a membrane protein with up to 70% of its weight derived from N-linked glycosylation, and it is primarily expressed in lymphoid and neuronal tissue. Phylogenetic analysis of OX2R with respect to other leukocyte IgSF glycoproteins suggests that OXR2 and OX2 share a common ancestral protein. The cytoplasmic portion of OX2R contains NPXY motifs that are known to interact with PTB/PID binding domains. The interaction between OX2 and OX2R may contribute to pathways that suppress and limit macrophage induced inflammatory damage in tissue.

Product:

1 mg/ml in Phosphate buffered saline (PBS) with 0.05% sodium azide, approx. pH 7.3.

Molecular Weight:

~ 36 kDa

Swiss-Prot:

Q8TD46

Purification&Purity:

The antibody was affinity-purified from rabbit antiserum by affinity-chromatography using epitope-specific immunogen and the purity is > 95% (by SDS-PAGE).

Applications:

WB: 1:500~1:1000

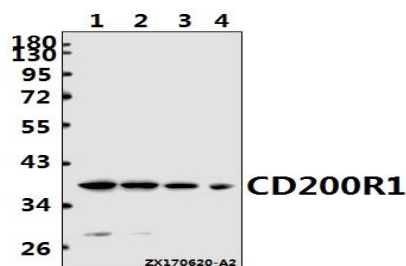
Storage&Stability:

Store at 4 °C short term. Aliquot and store at -20 °C long term. Avoid freeze-thaw cycles.

Specificity:

CD200R1 polyclonal antibody detects endogenous levels of CD200R1 protein.

DATA:



Western blot (WB) analysis of CD200R1 polyclonal antibody at 1:1000 dilution

Lane1:L02 whole cell lysate(40ug)

Lane2:A549 whole cell lysate(40ug)

Lane3:AML-12 whole cell lysate(40ug)

Lane4:H9C2 whole cell lysate(40ug)

Note:

For research use only, not for use in diagnostic procedure.

Bioworld Technology, Inc.

Add: 1660 South Highway 100, Suite 500 St. Louis Park, MN 55416, USA.

Email: info@bioworld.com

Tel: 6123263284

Fax: 6122933841

Bioworld technology, co. Ltd.

Add: No 9, weidi road Qixia District Nanjing, 210046, P. R. China.

Email: info@biogol.com

Tel: 0086-025-68037686

Fax: 0086-025-68035151