

## CD6 polyclonal antibody

Catalog: BS61731

Host: Rabbit

Reactivity: Human, Mouse, Rat

### BackGround:

CD6 is a type I transmembrane glycoprotein that is present on mature thymocytes, peripheral T cells and a subset of B cells. The CD6 glycoprotein is tyrosine phosphorylated during TCR-mediated T-cell activation and the size difference between the CD6 forms is due in part to differences in phosphorylation state. CD6 protein contains a 24-amino acid signal sequence, 3 extracellular "scavenger receptor cysteine-rich" (SRCR) domains, a membrane-spanning domain, and a 44-amino acid cytoplasmic domain. CD6 shows significant homology to CD5. CD6, which is also found in brain and B cell chronic lymphocytic leukemias, plays an important role in interactions of thymocytes with thymic epithelial cells. CD6 molecules can physically associate with the TCR/CD3 complex.

### Product:

1 mg/ml in Phosphate buffered saline (PBS) with 0.05% sodium azide, approx. pH 7.3.

### Molecular Weight:

~ 71 kDa

### Swiss-Prot:

P30203

### Purification&Purity:

The antibody was affinity-purified from rabbit antiserum by affinity-chromatography using epitope-specific immunogen and the purity is > 95% (by SDS-PAGE).

### Applications:

WB: 1:500~1:1000

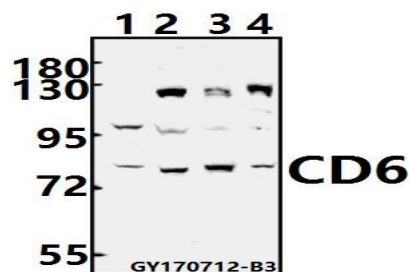
### Storage&Stability:

Store at 4 °C short term. Aliquot and store at -20 °C long term. Avoid freeze-thaw cycles.

### Specificity:

CD6 polyclonal antibody detects endogenous levels of CD6 protein.

### DATA:



Western blot (WB) analysis of CD6 polyclonal antibody at 1:500 dilution

Lane1: Jurkat whole cell lysate(40ug)

Lane2: MCF-7 whole cell lysate(40ug)

Lane3: H9C2 whole cell lysate(40ug)

Lane4: AML-12 whole cell lysate(40ug)

### Note:

For research use only, not for use in diagnostic procedure.

### Bioworld Technology, Inc.

Add: 1660 South Highway 100, Suite 500 St. Louis Park, MN 55416, USA.

Email: [info@bioworld.com](mailto:info@bioworld.com)

Tel: 6123263284

Fax: 6122933841

### Bioworld technology, co. Ltd.

Add: No 9, weidi road Qixia District Nanjing, 210046, P. R. China.

Email: [info@biogot.com](mailto:info@biogot.com)

Tel: 0086-025-68037686

Fax: 0086-025-68035151