

## NDUFA4L2 polyclonal antibody

Catalog: BS61715

Host: Rabbit

Reactivity: Human

### BackGround:

NDUFA4L2 (NADH dehydrogenase (ubiquinone) 1 alpha subcomplex, 4-like 2, also called NADH-ubiquinone oxidoreductase MLRQ subunit homologue) was clearly enriched in the mitochondrial fraction under hypoxic conditions, and immunofluorescence showed a clear colocalization of NDUFA4L2 and cytochrome c in some tumour cells. NDUFA4L2 overexpression is associated with tumour progression and a poor prognosis in CRC patients.

### Product:

1 mg/ml in Phosphate buffered saline (PBS) with 0.05% sodium azide, approx. pH 7.3.

### Molecular Weight:

~ 10 kDa

### Swiss-Prot:

Q9NRX3

### Purification&Purity:

The antibody was affinity-purified from rabbit antiserum by affinity-chromatography using epitope-specific immunogen and the purity is > 95% (by SDS-PAGE).

### Applications:

WB: 1:500~1:1000

### Storage&Stability:

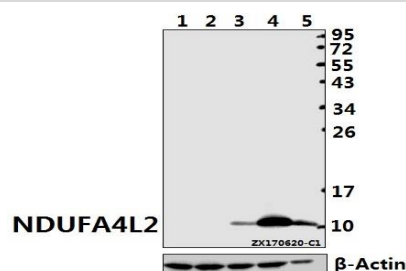
Store at 4 °C short term. Aliquot and store at -20 °C long

term. Avoid freeze-thaw cycles.

### Specificity:

NDUFA4L2 polyclonal antibody detects endogenous levels of NDUFA4L2 protein.

### DATA:



Western blot (WB) analysis of NDUFA4L2 polyclonal antibody at 1:1000 dilution

Lane1: AML-12 whole cell lysate(40ug)

Lane2: PC12 whole cell lysate(40ug)

Lane3: HepG2 whole cell lysate(40ug)

Lane4: L02 whole cell lysate(40ug)

Lane5: HCT116 whole cell lysate(20ug)

### Note:

For research use only, not for use in diagnostic procedure.

### Bioworld Technology, Inc.

Add: 1660 South Highway 100, Suite 500 St. Louis Park, MN 55416, USA.

Email: [info@bioworld.com](mailto:info@bioworld.com)

Tel: 6123263284

Fax: 6122933841

### Bioworld technology, co. Ltd.

Add: No 9, weidi road Qixia District Nanjing, 210046, P. R. China.

Email: [info@biogot.com](mailto:info@biogot.com)

Tel: 0086-025-68037686

Fax: 0086-025-68035151