

TBPL2 polyclonal antibody

Catalog: BS61690

Host: Rabbit

Reactivity: Human, Mouse, Rat

BackGround:

TATA box-binding protein-like protein 2, transcription factor required in complex with TAF3 for the differentiation of myoblasts into myocytes. The complex replaces TFIID at specific promoters at an early stage in the differentiation process (By similarity).

Product:

1 mg/ml in Phosphate buffered saline (PBS) with 0.05% sodium azide, approx. pH 7.3.

Molecular Weight:

~ 41 kDa

Swiss-Prot:

Q6SJ96

Purification&Purity:

The antibody was affinity-purified from rabbit antiserum by affinity-chromatography using epitope-specific immunogen and the purity is > 95% (by SDS-PAGE).

Applications:

WB: 1:500~1:1000

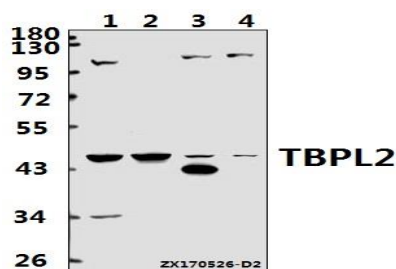
Storage&Stability:

Store at 4 °C short term. Aliquot and store at -20 °C long term. Avoid freeze-thaw cycles.

Specificity:

TBPL2 polyclonal antibody detects endogenous levels of TBPL2 protein.

DATA:



Western blot (WB) analysis of TBPL2 polyclonal antibody at 1:500 dilution

Lane1:A2780 whole cell lysate(40ug)

Lane2:H1792 whole cell lysate(40ug)

Lane3:The Testis tissue lysate of Mouse(40ug)

Lane4:The Testis tissue lysate of Rat(40ug)

Note:

For research use only, not for use in diagnostic procedure.

Bioworld Technology, Inc.

Add: 1660 South Highway 100, Suite 500 St. Louis Park, MN 55416, USA.

Email: info@bioworld.com

Tel: 6123263284

Fax: 6122933841

Bioworld technology, co. Ltd.

Add: No 9, weidi road Qixia District Nanjing, 210046, P. R. China.

Email: info@biogol.com

Tel: 0086-025-68037686

Fax: 0086-025-68035151