

## Cdc25A polyclonal antibody

Catalog: BS61638

Host: Rabbit

Reactivity: Human, Mouse, Rat

### BackGround:

M-phase inducer phosphatase 1 is a Tyrosine protein phosphatase which functions as a dosage-dependent inducer of mitotic progression. Directly dephosphorylates CDK1 and stimulates its kinase activity. Also dephosphorylates CDK2 in complex with cyclin E, in vitro.

### Product:

1 mg/ml in Phosphate buffered saline (PBS) with 0.05% sodium azide, approx. pH 7.3.

### Molecular Weight:

~ 70 kDa

### Swiss-Prot:

P30304

### Purification&Purity:

The antibody was affinity-purified from rabbit antiserum by affinity-chromatography using epitope-specific immunogen and the purity is > 95% (by SDS-PAGE).

### Applications:

WB: 1:500~1:1000

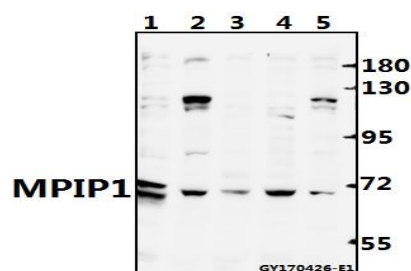
### Storage&Stability:

Store at 4 °C short term. Aliquot and store at -20 °C long term. Avoid freeze-thaw cycles.

### Specificity:

MPIP1 polyclonal antibody detects endogenous levels of MPIP1 protein.

### DATA:



Western blot (WB) analysis of MPIP1 polyclonal antibody at 1:500 dilution

Lane1:CT26 whole cell lysate(40ug)

Lane2:PC12 whole cell lysate(40ug)

Lane3:A549 whole cell lysate(40ug)

Lane4:L02 whole cell lysate(40ug)

Lane5:Hela whole cell lysate(40ug)

### Note:

For research use only, not for use in diagnostic procedure.

### Bioworld Technology, Inc.

Add: 1660 South Highway 100, Suite 500 St. Louis Park, MN 55416, USA.

Email: [info@bioworld.com](mailto:info@bioworld.com)

Tel: 6123263284

Fax: 6122933841

### Bioworld technology, co. Ltd.

Add: No 9, weidi road Qixia District Nanjing, 210046, P. R. China.

Email: [info@biogot.com](mailto:info@biogot.com)

Tel: 0086-025-68037686

Fax: 0086-025-68035151