

## LDLRAD1 polyclonal antibody

Catalog: BS61636

Host: Rabbit

Reactivity: Human, Mouse, Rat

### BackGround:

Low-density lipoprotein receptor class A domain-containing protein 1, belonging to the Low-density lipoprotein receptor class A domain-containing protein family. LDLRAD1 and LDLRAD2 function as receptor, LDLRAD3 may influence APP processing, resulting in a decrease in sAPP- $\alpha$  production and increased amyloidogenic P3 peptide production, LDLRAD3 functions as a negative regulator of TGF- $\beta$  signaling and thereby probably plays a role in cell proliferation, differentiation, apoptosis, motility, extracellular matrix production and immunosuppression. In the canonical TGF- $\beta$  pathway, ZFYVE9/SARA recruits the intracellular signal transducer and transcriptional modulators SMAD2 and SMAD3 to the TGF- $\beta$  receptor. Phosphorylated by the receptor, SMAD2 and SMAD3 then form a heteromeric complex with SMAD4 that translocates to the nucleus to regulate transcription. Through interaction with SMAD2 and SMAD3, LDLRAD4 may compete with ZFYVE9 and SMAD4 and prevent propagation of the intracellular signal.

### Product:

1 mg/ml in Phosphate buffered saline (PBS) with 0.05% sodium azide, approx. pH 7.3.

### Molecular Weight:

~ 27 kDa

### Swiss-Prot:

Q5T700

### Purification&Purity:

The antibody was affinity-purified from rabbit antiserum by affinity-chromatography using epitope-specific im-

munogen and the purity is &gt; 95% (by SDS-PAGE).

### Applications:

WB: 1:500~1:1000

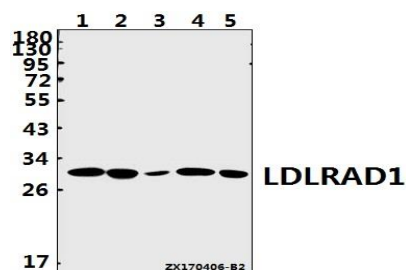
### Storage&Stability:

Store at 4 °C short term. Aliquot and store at -20 °C long term. Avoid freeze-thaw cycles.

### Specificity:

LDLRAD1 polyclonal antibody detects endogenous levels of LDLRAD1 protein.

### DATA:



Western blot (WB) analysis of LDLRAD1 polyclonal antibody at 1:500 dilution

Lane1: Jurkat whole cell lysate (40ug)

Lane2: A549 whole cell lysate (40ug)

Lane3: Panc1 whole cell lysate (40ug)

Lane4: MEF whole cell lysate (40ug)

Lane5: PC12 whole cell lysate (40ug)

### Note:

For research use only, not for use in diagnostic procedure.

### Bioworld Technology, Inc.

Add: 1660 South Highway 100, Suite 500 St. Louis Park, MN 55416, USA.

Email: [info@bioworld.com](mailto:info@bioworld.com)

Tel: 6123263284

Fax: 6122933841

### Bioworld technology, co. Ltd.

Add: No 9, weidi road Qixia District Nanjing, 210046, P. R. China.

Email: [info@biogot.com](mailto:info@biogot.com)

Tel: 0086-025-68037686

Fax: 0086-025-68035151