

## CMTM3 polyclonal antibody

Catalog: BS61621

Host: Rabbit

Reactivity: Human, Mouse, Rat

### BackGround:

Chemokines are members of a superfamily of small inducible, secreted, proinflammatory cytokines. Members of the chemokine-like factor superfamily (CKLFSF) share similarities with both chemokine and transmembrane 4 superfamilies of signaling molecules. As a member of the CKLFSF family of proteins, CMTM3 (CKLF-like MARVEL transmembrane domain-containing protein 3), also known as Chemokine-like factor superfamily member 3, is a 182 amino acid membrane protein that is expressed in placenta, testis and leukocytes. The gene encoding CMTM3 resides in a tight gene cluster on human chromosome 16 with CKLF, CMTM1, CMTM2 and CMTM4. Silencing or downregulation of CMTM3 due to aberrant promoter CpG methylation of its gene is frequently observed in common carcinomas, suggesting that CMTM3 is a tumor suppressor. CMTM3 also seems to repress activation of AR (androgen receptor) and may therefore play a role in the maturation and maintenance of male reproduction. There are two isoforms of CMTM3 that are produced as a result of alternative splicing events.

### Product:

1 mg/ml in Phosphate buffered saline (PBS) with 0.05% sodium azide, approx. pH 7.3.

### Molecular Weight:

~ 19 kDa

### Swiss-Prot:

Q96MX0

### Purification&Purity:

The antibody was affinity-purified from rabbit antiserum by affinity-chromatography using epitope-specific im-

munogen and the purity is &gt; 95% (by SDS-PAGE).

### Applications:

WB: 1:500~1:1000

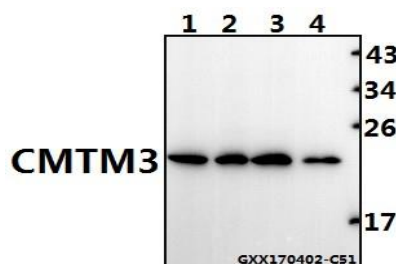
### Storage&Stability:

Store at 4 °C short term. Aliquot and store at -20 °C long term. Avoid freeze-thaw cycles.

### Specificity:

CMTM3 polyclonal antibody detects endogenous levels of CMTM3 protein.

### DATA:



Western blot (WB) analysis of CMTM3 polyclonal antibody at 1:500 dilution

Lane1: The Testis tissue lysate of Rat(40ug)

Lane2: CT26 whole cell lysate(40ug)

Lane3: A549 whole cell lysate(40ug)

Lane4: COS-7 whole cell lysate(40ug)

### Note:

For research use only, not for use in diagnostic procedure.

### Bioworld Technology, Inc.

Add: 1660 South Highway 100, Suite 500 St. Louis Park, MN 55416, USA.

Email: [info@bioworld.com](mailto:info@bioworld.com)

Tel: 6123263284

Fax: 6122933841

### Bioworld technology, co. Ltd.

Add: No 9, weidi road Qixia District Nanjing, 210046, P. R. China.

Email: [info@biogot.com](mailto:info@biogot.com)

Tel: 0086-025-68037686

Fax: 0086-025-68035151