

**MRPL15 polyclonal antibody**

Catalog: BS61612

Host: Rabbit

Reactivity: Human

**BackGround:**

Mammalian mitochondrial ribosomes (mitoribosomes) are responsible for protein synthesis within the mitochondrion. The mitoribosomes are composed of a 4:1 ratio of protein to RNA, with the proteins forming two subunits, the 28S subunit and the 39S subunit. Across species, the proteins that make up the mitoribosome subunits vary greatly in sequence, preventing easy recognition by sequence homology. MRP-L15 (mitochondrial 39S ribosomal protein L15), also known as L15mt, is a 296 amino acid mitochondrial ribosomal protein belonging to the ribosomal protein L15P family. Localized to mitochondria, MRP-L15 is present in the 39S subunit of the mitoribosomes.

**Product:**

1 mg/ml in Phosphate buffered saline (PBS) with 0.05% sodium azide, approx. pH 7.3.

**Molecular Weight:**

~ 36 kDa

**Swiss-Prot:**

Q9P015

**Purification&Purity:**

The antibody was affinity-purified from rabbit antiserum by affinity-chromatography using epitope-specific immunogen and the purity is > 96% (by SDS-PAGE).

**Applications:**

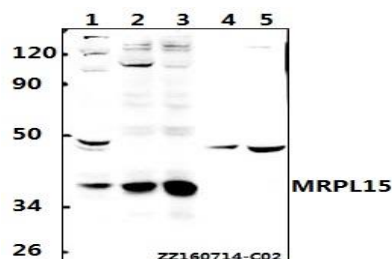
WB: 1:500~1:1000

**Storage&Stability:**

Store at 4 °C short term. Aliquot and store at -20 °C long term. Avoid freeze-thaw cycles.

**Specificity:**

MRPL15 polyclonal antibody detects endogenous levels of MRPL15 protein.

**DATA:**

Western blot (WB) analysis of MRPL15 polyclonal antibody at 1:500 dilution

Lane1:Hela whole cell lysate(40ug)

Lane2:HEK293T whole cell lysate(40ug)

Lane3:786-O whole cell lysate(40ug)

Lane4:The heart tissue lysate of Mouse(40ug)

Lane5:The heart tissue lysate of Rat(40ug)

**Note:**

For research use only, not for use in diagnostic procedure.

**Bioworld Technology, Inc.**

Add: 1660 South Highway 100, Suite 500 St. Louis Park, MN 55416, USA.

Email: [info@bioworld.com](mailto:info@bioworld.com)

Tel: 6123263284

Fax: 6122933841

**Bioworld technology, co. Ltd.**

Add: No 9, weidi road Qixia District Nanjing, 210046, P. R. China.

Email: [info@biogol.com](mailto:info@biogol.com)

Tel: 0086-025-68037686

Fax: 0086-025-68035151