

## MRPL10 polyclonal antibody

Catalog: BS61591

Host: Rabbit

Reactivity: Human

### BackGround:

Mitochondria have their own translation machinery for production of 13 proteins that are required for oxidative phosphorylation. MRP-L10 (39S ribosomal protein L10, mitochondrial), also known as MRPL8, is a 261 amino acid protein that is a component of the large ribosomal subunit of the mitochondria. MRP-L10 is one of the 70 protein components of mitochondrial ribosomes that are encoded by the nuclear genome. MRP-L10 is deacetylated in a NAD<sup>+</sup>-dependent manner by SIRT3, which is an event that contributes to the regulation of mitochondrial protein synthesis. The gene encoding MRP-L10 maps to human chromosome 17, which comprises over 2.5% of the human genome and encodes over 1,200 genes. Two key tumor suppressor genes are associated with chromosome 17, namely, p53 and BRCA1.

### Product:

1 mg/ml in Phosphate buffered saline (PBS) with 0.05% sodium azide, approx. pH 7.3.

### Molecular Weight:

~ 29 kDa

### Swiss-Prot:

Q7Z7H8

### Purification&Purity:

The antibody was affinity-purified from rabbit antiserum by affinity-chromatography using epitope-specific immunogen and the purity is > 96% (by SDS-PAGE).

### Applications:

WB: 1:500~1:1000

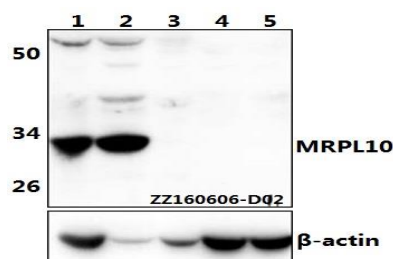
### Storage&Stability:

Store at 4 °C short term. Aliquot and store at -20 °C long term. Avoid freeze-thaw cycles.

### Specificity:

MRPL10 polyclonal antibody detects endogenous levels of MRPL10 protein.

### DATA:



Western blot (WB) analysis of MRPL10 polyclonal antibody at 1:500 dilution

Lane1:THP-1 whole cell lysate(40ug)

Lane2:HEK293T whole cell lysate(40ug)

Lane3:PC12 whole cell lysate(40ug)

Lane4:The brain tissue lysate of Fetal Mouse(40ug)

Lane5:The brain tissue lysate of Fetal Rat(40ug)

### Note:

For research use only, not for use in diagnostic procedure.

### Bioworld Technology, Inc.

Add: 1660 South Highway 100, Suite 500 St. Louis Park, MN 55416, USA.

Email: [info@bioworld.com](mailto:info@bioworld.com)

Tel: 6123263284

Fax: 6122933841

### Bioworld technology, co. Ltd.

Add: No 9, weidi road Qixia District Nanjing, 210046, P. R. China.

Email: [info@biogot.com](mailto:info@biogot.com)

Tel: 0086-025-68037686

Fax: 0086-025-68035151