

CGREF1 polyclonal antibody

Catalog: BS61581

Host: Rabbit

Reactivity: Human, Mouse, Rat

BackGround:

CGREF1 (cell growth regulator with EF-hand domain 1), also known as CGR11, is a 301 amino acid secreted protein that contains two highly conserved calcium binding EF-hand domains, which are required for mediating cell-cell adhesion. Induced by p53, CGREF1 is able to inhibit cell growth in various cell lines. CGREF1 is encoded by a gene located on human chromosome 2, which houses over 1,400 genes and comprises nearly 8% of the human genome. Harlequin ichthyosis, a rare and morbid skin deformity, is associated with mutations in the ABCA12 gene, while the lipid metabolic disorder sitosterolemia is associated with defects in the ABCG5 and ABCG8 genes. Additionally, an extremely rare recessive genetic disorder, Alström syndrome, is caused by mutations in the ALMS1 gene, which maps to chromosome 2.

Product:

1 mg/ml in Phosphate buffered saline (PBS) with 0.05% sodium azide, approx. pH 7.3.

Molecular Weight:

~ 45 kDa

Swiss-Prot:

Q99674

Purification&Purity:

The antibody was affinity-purified from rabbit antiserum by affinity-chromatography using epitope-specific immunogen and the purity is > 95% (by SDS-PAGE)

Applications:

WB: 1:500~1:1000

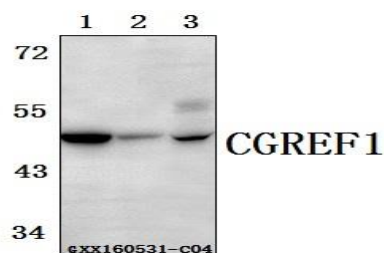
Storage&Stability:

Store at 4 °C short term. Aliquot and store at -20 °C long term. Avoid freeze-thaw cycles.

Specificity:

CGREF1 polyclonal antibody detects endogenous levels of CGREF1 protein.

DATA:



Western blot (WB) analysis of CGREF1 polyclonal antibody at 1:500 dilution

Lane1: The Brain tissue lysate of Mouse(40ug)

Lane2: The Brain tissue lysate of Rat(40ug)

Lane3: L02 whole cell lysate(40ug)

Note:

For research use only, not for use in diagnostic procedure.

Bioworld Technology, Inc.

Add: 1660 South Highway 100, Suite 500 St. Louis Park, MN 55416, USA.

Email: info@bioworld.com

Tel: 6123263284

Fax: 6122933841

Bioworld technology, co. Ltd.

Add: No 9, weidi road Qixia District Nanjing, 210046, P. R. China.

Email: info@biogot.com

Tel: 0086-025-68037686

Fax: 0086-025-68035151