

MAST2 polyclonal antibody

Catalog: BS61576

Host: Rabbit

Reactivity: Human, Mouse, Rat

BackGround:

Syntrophin is an adapter protein that functions to bind certain signaling molecules to the dystrophin-associated protein complex. This complex connects the extracellular matrix to the intracellular cytoskeleton for construction and maintenance of the postsynaptic structures in the neuromuscular junction and the central nervous system. Microtubule-associated serine/threonine-protein kinase 2 (MAST205) is a testis-specific, cytoplasmic protein that functions in a multi-protein complex in the maturation of spermatids. MAST205 is involved in linking the dystrophin/utrophin network with microtubule filaments via Syntrophin. By forming a complex with TRAF6, MAST205 regulates lipopolysaccharide-induced IL-12 synthesis in macrophages. This leads to the inhibition of TRAF6 NF- κ B activation. Two isoforms exist for MAST205 due to alternative splicing. Isoform 1 represents the full length protein, while isoform 2 lacks the residues 327-396 and 1091-1113. The N-terminus of MAST205 must be phosphorylated in order for ubiquitination to occur at the same site. This ubiquitination leads to the degradation of MAST205 via proteasome-mediated proteolysis.

Product:

1 mg/ml in Phosphate buffered saline (PBS) with 0.05% sodium azide, approx. pH 7.3.

Molecular Weight:

~ 196 kDa

Swiss-Prot:

Q6P0Q8

Purification&Purity:

The antibody was affinity-purified from rabbit antiserum by affinity-chromatography using epitope-specific immunogen and the purity is > 95% (by SDS-PAGE).

Applications:

WB: 1:500~1:1000

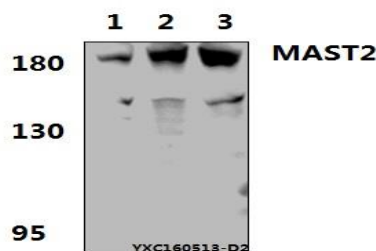
Storage&Stability:

Store at 4 °C short term. Aliquot and store at -20 °C long term. Avoid freeze-thaw cycles.

Specificity:

MAST2 polyclonal antibody detects endogenous levels of MAST2 protein.

DATA:



Western blot (WB) analysis of MAST2 polyclonal antibody at 1:500 dilution

Lane1: PC3 treated with PMA(60ng/ml, 30min) whole cell lysate(40 μ g)

Lane2: The Testis tissue lysate of Rat (40 μ g)

Lane3: The Testis tissue lysate of Mouse(40 μ g)

Note:

For research use only, not for use in diagnostic procedure.

Bioworld Technology, Inc.

Add: 1660 South Highway 100, Suite 500 St. Louis Park, MN 55416, USA.

Email: info@bioworld.com

Tel: 6123263284

Fax: 6122933841

Bioworld technology, co. Ltd.

Add: No 9, weidi road Qixia District Nanjing, 210046, P. R. China.

Email: info@biogol.com

Tel: 0086-025-68037686

Fax: 0086-025-68035151