

## NTPCR polyclonal antibody

Catalog: BS61566

Host: Rabbit

Reactivity: Human, Mouse, Rat

### BackGround:

Belonging to the THEP1 NTPase family, C1orf57 (also known as nucleoside triphosphate phosphohydrolase), and its mouse homolog, 2310079N02Rik, are 190 amino acid proteins that has nucleotide phosphatase activity towards ATP, GTP, TTP, CTP and UTP. Acting as a monomer, it also hydrolyzes nucleoside diphosphates with lower efficiency. The gene encoding C1orf57 maps to human chromosome 1, the largest human chromosome spanning about 260 million base pairs and making up 8% of the human genome. There are about 3,000 genes on chromosome 1, and considering the great number of genes there are also a large number of diseases associated with chromosome 1. Notably, the rare aging disease Hutchinson-Gilford progeria is associated with the LMNA gene which encodes lamin A. When defective, the LMNA gene product can build up in the nucleus and cause characteristic nuclear blebs. The mechanism of rapidly enhanced aging is unclear and is a topic of continuing exploration. The MUTYH gene is located on chromosome 1 and is partially responsible for familial adenomatous polyposis. Stickler syndrome, Parkinsons, Gaucher disease and Usher syndrome are also associated with chromosome 1.

### Product:

1 mg/ml in Phosphate buffered saline (PBS) with 0.05% sodium azide, approx. pH 7.3.

### Molecular Weight:

~ 21 kDa

### Swiss-Prot:

Q9BSD7

### Purification&Purity:

The antibody was affinity-purified from rabbit antiserum by affinity-chromatography using epitope-specific immunogen and the purity is > 95% (by SDS-PAGE)

### Applications:

WB: 1:500~1:1000

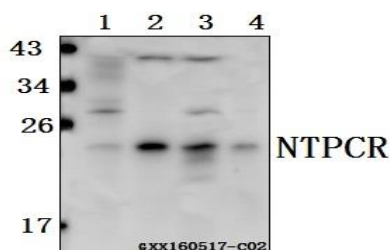
### Storage&Stability:

Store at 4 °C short term. Aliquot and store at -20 °C long term. Avoid freeze-thaw cycles.

### Specificity:

NTPCR polyclonal antibody detects endogenous levels of NTPCR protein.

### DATA:



Western blot (WB) analysis of NTPCR polyclonal antibody at 1:500 dilution

Lane1:HCT116 whole cell lysate(40ug)

Lane2:HCC827 whole cell lysate(40ug)

Lane3:L02 whole cell lysate(40ug)

Lane4:SK-OVCAR3 whole cell lysate(40ug)

### Note:

For research use only, not for use in diagnostic procedure.

### Bioworld Technology, Inc.

Add: 1660 South Highway 100, Suite 500 St. Louis Park, MN 55416, USA.

Email: [info@bioworld.com](mailto:info@bioworld.com)

Tel: 6123263284

Fax: 6122933841

### Bioworld technology, co. Ltd.

Add: No 9, weidi road Qixia District Nanjing, 210046, P. R. China.

Email: [info@biogot.com](mailto:info@biogot.com)

Tel: 0086-025-68037686

Fax: 0086-025-68035151