

## MRPL22 polyclonal antibody

Catalog: BS61535

Host: Rabbit

Reactivity: Human, Mouse, Rat

### BackGround:

Mammalian mitochondrial ribosomes (mitoribosomes) are responsible for protein synthesis within the mitochondrion. The mitoribosomes are composed of a 4:1 ratio of protein to RNA, with the proteins forming two subunits, the 28S subunit and the 39S subunit. Across species, the proteins that make up the mitoribosome subunits vary greatly in sequence, preventing easy recognition by sequence homology. MRP-L22 (mitochondrial ribosomal protein L22), also known as L22mt, RPML25, HSPC158 or MRP-L25, is a 206 amino acid protein that localizes to the mitochondrion, where it exists as a component of the 39S ribosomal subunit and works in conjunction with other MRPs to mediate protein synthesis. Belonging to the ribosomal protein L22P family, MRP-L22 is encoded by a gene located on human chromosome 5, which contains 181 million base pairs and comprises nearly 6% of the human genome.

### Product:

1 mg/ml in Phosphate buffered saline (PBS) with 0.05% sodium azide, approx. pH 7.3.

### Molecular Weight:

~ 23 kDa

### Swiss-Prot:

Q9NWU5

### Purification&Purity:

The antibody was affinity-purified from rabbit antiserum by affinity-chromatography using epitope-specific immunogen and the purity is > 96% (by SDS-PAGE).

### Applications:

WB: 1:500~1:1000

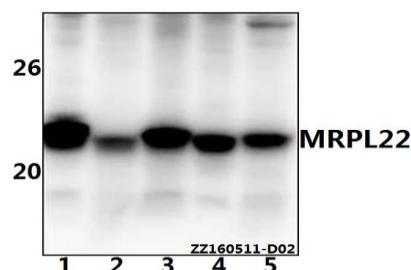
### Storage&Stability:

Store at 4 °C short term. Aliquot and store at -20 °C long term. Avoid freeze-thaw cycles.

### Specificity:

MRPL22 polyclonal antibody detects endogenous levels of MRPL22 protein.

### DATA:



Western blot (WB) analysis of MRPL22 polyclonal antibody at 1:500 dilution

Lane1:THP-1 whole cell lysate(40ug)

Lane2:Hela whole cell lysate(40ug)

Lane3:HEK293T whole cell lysate(40ug)

Lane4:PC12 whole cell lysate(40ug)

Lane5:AML-12 whole cell lysate(40ug)

### Note:

For research use only, not for use in diagnostic procedure.

### Bioworld Technology, Inc.

Add: 1660 South Highway 100, Suite 500 St. Louis Park, MN 55416, USA.

Email: [info@bioworld.com](mailto:info@bioworld.com)

Tel: 6123263284

Fax: 6122933841

### Bioworld technology, co. Ltd.

Add: No 9, weidi road Qixia District Nanjing, 210046, P. R. China.

Email: [info@biogot.com](mailto:info@biogot.com)

Tel: 0086-025-68037686

Fax: 0086-025-68035151