

## TXK polyclonal antibody

Catalog: BS61497

Host: Rabbit

Reactivity: Human, Mouse, Rat

### BackGround:

The Tec family of non-receptor tyrosine kinases is composed of six proteins designated Tec, Emt (also known as Itk or Tsk), Btk (previously known as Atk, BPK or Emb), Bmx, Txk (also known as Rlk) and Dsrc28C. All members of the family contain SH3 and SH2 domains and, with the exception of Txk and Dsrc28C, also contain a pleckstrin homology (PH) and a Tec homology (TH) domain in their amino termini. Four alternatively spliced forms of Tec are found to be expressed broadly in cells of hematopoietic lineage and hepatocytes. The Emt gene product associates with CD28 and becomes activated subsequent to CD28 ligation. Btk is necessary for proper B cell development, and mutations in the gene encoding Btk have been associated with families suffering from X-linked agammaglobulinemia, also referred to as Bruton's disease. The Bmx protein shares a high degree of homology with Btk and seems to be expressed at highest levels in the heart. Txk expression is T cell-specific, while expression of the Drosophila Tec homolog, Dsrc28C, is developmentally regulated.

### Product:

1 mg/ml in Phosphate buffered saline (PBS) with 0.05% sodium azide, approx. pH 7.3.

### Molecular Weight:

~ 61 kDa

### Swiss-Prot:

P42681

### Purification&Purity:

The antibody was affinity-purified from rabbit antiserum by affinity-chromatography using epitope-specific immunogen and the purity is > 95% (by SDS-PAGE).

### Applications:

WB: 1:500~1:1000

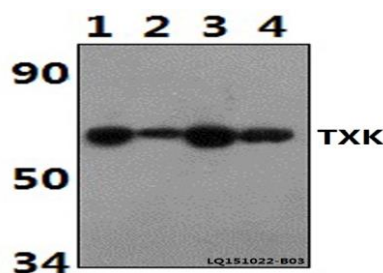
### Storage&Stability:

Store at 4 °C short term. Aliquot and store at -20 °C long term. Avoid freeze-thaw cycles.

### Specificity:

TXK polyclonal antibody detects endogenous levels of TXK protein.

### DATA:



Western blot (WB) analysis of TXK polyclonal antibody at 1:500 dilution

Lane1: Jurkat whole cell lysate (40ug)

Lane2: The Spleen tissue lysate of Rat (30ug)

Lane3: The Spleen tissue lysate of Mouse (30ug)

Lane4: THP-1 whole cell lysate (40ug)

### Note:

For research use only, not for use in diagnostic procedure.

### Bioworld Technology, Inc.

Add: 1660 South Highway 100, Suite 500 St. Louis Park, MN 55416, USA.

Email: [info@bioworld.com](mailto:info@bioworld.com)

Tel: 6123263284

Fax: 6122933841

### Bioworld technology, co. Ltd.

Add: No 9, weidi road Qixia District Nanjing, 210046, P. R. China.

Email: [info@biogot.com](mailto:info@biogot.com)

Tel: 0086-025-68037686

Fax: 0086-025-68035151