

VSIG2 polyclonal antibody

Catalog: BS61489

Host: Rabbit

Reactivity: Human, Mouse, Rat

BackGround:

CTXL, a cortical thymocyte marker, is a member of the immunoglobulin (Ig) superfamily and has features of both antigen specific receptors and adhesion molecules. This single pass, type I protein contains a signal peptide, an extracellular V type Ig like domain followed by a C2 type Ig like domain and a cytoplasmic tail. Expression levels of CTXL are high in the stomach, colon, prostate, trachea, and thyroid gland, with lower levels observed in bladder and lung tissues. CTXL is not expressed in the thymus. CTXL is developmentally regulated and may be involved in thymocyte selection. It localizes to junctional complexes between endothelial and epithelial cells and may play a role in cell-cell adhesion and transmigration of leukocytes.

Product:

1 mg/ml in Phosphate buffered saline (PBS) with 0.05% sodium azide, approx. pH 7.3.

Molecular Weight:

~ 34 kDa

Swiss-Prot:

Q96IQ7

Purification&Purity:

The antibody was affinity-purified from rabbit antiserum by affinity-chromatography using epitope-specific immunogen and the purity is > 95% (by SDS-PAGE).

Applications:

WB: 1:500~1:1000

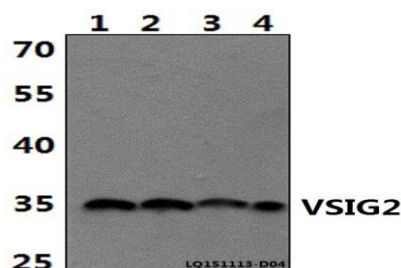
Storage&Stability:

Store at 4 °C short term. Aliquot and store at -20 °C long term. Avoid freeze-thaw cycles.

Specificity:

VSIG2 polyclonal antibody detects endogenous levels of VSIG2 protein.

DATA:



Western blot (WB) analysis of VSIG2 polyclonal antibody at 1:500 dilution

Lane1:DLD whole cell lysate(40ug)

Lane2:The Stomach tissue lysate of Rat(30ug)

Lane3:The Stomach tissue lysate of Mouse(30ug)

Lane4:PC3 whole cell lysate(40ug)

Note:

For research use only, not for use in diagnostic procedure.

Bioworld Technology, Inc.

Add: 1660 South Highway 100, Suite 500 St. Louis Park, MN 55416, USA.

Email: info@bioworld.com

Tel: 6123263284

Fax: 6122933841

Bioworld technology, co. Ltd.

Add: No 9, weidi road Qixia District Nanjing, 210046, P. R. China.

Email: info@biogot.com

Tel: 0086-025-68037686

Fax: 0086-025-68035151