

## VPS4B polyclonal antibody

Catalog: BS61477

Host: Rabbit

Reactivity: Human, Mouse, Rat

### BackGround:

Class E vacuolar protein sorting (vps) proteins are necessary for appropriate sorting of receptors in the yeast endocytic pathway. The yeast Vps4p is a member of the AAA protein family (ATPases associated with diverse cellular activities) and plays an important role in transporting proteins out of a prevacuolar endosomal compartment. In human, two non-allelic orthologous proteins (VPS4A and VPS4B) of yeast Vps4p are known and can form heteromeric complexes with each other. Both VPS4 (also known as SKD1 in mouse) proteins are class E VPSs and are involved in intracellular protein trafficking, similar to Vps4p in yeast. A human CHMP1 protein, which is implicated in multivesicular body formation, physically interacts with VPS4. HIV-1 uses cellular machinery to bud from infected cells and requires VPS4 and TSG101/VPS23 for this budding process. Dominant negative mutant of VPS4 inhibit vacuolar protein sorting and also arrest HIV-1 and MLV budding. Thus, retroviruses normally use the VPS pathway to form multivesicular bodies during the budding process.

### Product:

1 mg/ml in Phosphate buffered saline (PBS) with 0.05% sodium azide, approx. pH 7.3.

### Molecular Weight:

~ 49 kDa

### Swiss-Prot:

O75351

### Purification&Purity:

The antibody was affinity-purified from rabbit antiserum by affinity-chromatography using epitope-specific immunogen and the purity is > 95% (by SDS-PAGE).

### Applications:

WB: 1:500~1:1000

IHC: 1:50~1:200

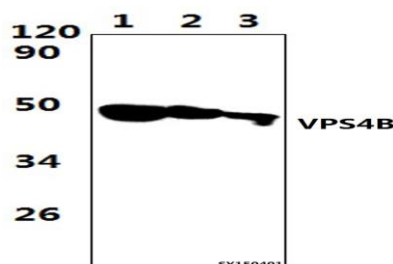
### Storage&Stability:

Store at 4 °C short term. Aliquot and store at -20 °C long term. Avoid freeze-thaw cycles.

### Specificity:

VPS4B polyclonal antibody detects endogenous levels of VPS4B protein.

### DATA:



Western blot (WB) analysis of VPS4B polyclonal antibody at 1:1000 dilution

Lane1: HEK293T whole cell lysate (57µg)

Lane2: The Lung tissue lysate of Rat (39µg)

Lane3: Raw264.7 whole cell lysate (51µg)

### Note:

For research use only, not for use in diagnostic procedure.

### Bioworld Technology, Inc.

Add: 1660 South Highway 100, Suite 500 St. Louis Park, MN 55416, USA.

Email: [info@bioworld.com](mailto:info@bioworld.com)

Tel: 6123263284

Fax: 6122933841

### Bioworld technology, co. Ltd.

Add: No 9, weidi road Qixia District Nanjing, 210046, P. R. China.

Email: [info@biogot.com](mailto:info@biogot.com)

Tel: 0086-025-68037686

Fax: 0086-025-68035151