

UBE2G1 polyclonal antibody

Catalog: BS61475

Host: Rabbit

Reactivity: Human, Mouse, Rat

BackGround:

Ubiquitin is an abundant, highly conserved protein found in all eukaryotic cells either free or covalently attached to cellular proteins. The primary function of ubiquitin in mammalian systems is to clear abnormal, foreign, and improperly folded proteins by targeting them for proteasome degradation. In *Saccharomyces cerevisiae*, ubiquitin-like proteins include Rub1, Ula1, Uba3, Smt3, Ubc2, Ubc12 and Ubc9. Rub1 shares 53% homology with ubiquitin and requires activation via the E2 proteins, including Ula1, Uba3 and Ubc12 in order to conjugate to substrates directed to different proteolytic systems. Ubc4 catalyzes ubiquitination of IκBα in a phosphorylation and SCFB-TRCP dependent manner. In this particular reaction, E1 first transfers ubiquitin to the E2 component Ubc4, and Ubc4 then associates with E3 ligase, which conjugates the poly-ubiquitin chain on a target protein. In this fashion, the chain tags the IκBα for degradation by a proteasome thus lifting the inhibitory effect of IκBα on NFκB and allowing NFκB to enter the nucleus.

Product:

1 mg/ml in Phosphate buffered saline (PBS) with 0.05% sodium azide, approx. pH 7.3.

Molecular Weight:

~ 19 kDa

Swiss-Prot:

P62253

Purification&Purity:

The antibody was affinity-purified from rabbit antiserum by affinity-chromatography using epitope-specific immunogen and the purity is > 95% (by SDS-PAGE).

Applications:

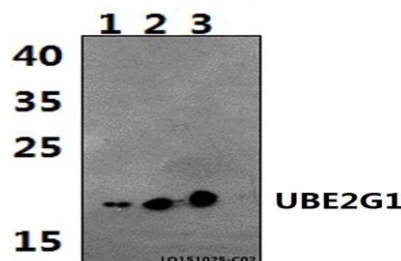
WB: 1:500~1:1000

Storage&Stability:

Store at 4 °C short term. Aliquot and store at -20 °C long term. Avoid freeze-thaw cycles.

Specificity:

UBE2G1 polyclonal antibody detects endogenous levels of UBE2G1 protein.

DATA:

Western blot (WB) analysis of UBE2G1 polyclonal antibody at 1:500 dilution

Lane1:Hela whole cell lysate(40ug)

Lane2:NIH-3T3 whole cell lysate(40ug)

Lane3:H9C2 whole cell lysate(40ug)

Note:

For research use only, not for use in diagnostic procedure.

Bioworld Technology, Inc.

Add: 1660 South Highway 100, Suite 500 St. Louis Park, MN 55416, USA.

Email: info@bioworld.com

Tel: 6123263284

Fax: 6122933841

Bioworld technology, co. Ltd.

Add: No 9, weidi road Qixia District Nanjing, 210046, P. R. China.

Email: info@biogot.com

Tel: 0086-025-68037686

Fax: 0086-025-68035151