

CDH20 polyclonal antibody

Catalog: BS61431

Host: Rabbit

Reactivity: Human, Mouse, Rat

BackGround:

The cadherins are a family of calcium-dependent adhesion molecules that function to mediate cell-cell binding critical to the maintenance of structure and morphogenesis. Cadherins each contain a large extracellular domain at the N-terminus, which is characterized by a series of five homologous repeats, the most distal of which is thought to be responsible for binding specificity. CDH20 (cadherin 20, type 2), also known as Cdh7 or CDH7L3, is an 801 amino acid single-pass type I membrane protein that contains five cadherin domains and belongs to the cadherin superfamily. Expressed in both adult and fetal brain, as well as in placenta, CDH20 functions as a calcium-dependent cell adhesion protein that is thought to participate in the sorting of heterogeneous cell types.

Product:

1 mg/ml in Phosphate buffered saline (PBS) with 0.05% sodium azide, approx. pH 7.3.

Molecular Weight:

~ 89 kDa

Swiss-Prot:

Q9HBT6

Purification&Purity:

The antibody was affinity-purified from rabbit antiserum by affinity-chromatography using epitope-specific immunogen and the purity is > 95% (by SDS-PAGE).

Applications:

WB: 1:500~1:1000

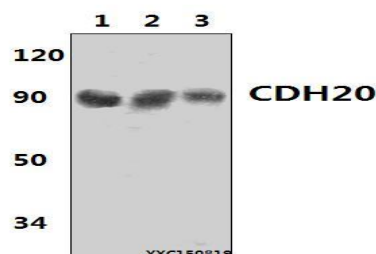
Storage&Stability:

Store at 4 °C short term. Aliquot and store at -20 °C long term. Avoid freeze-thaw cycles.

Specificity:

CDH20 polyclonal antibody detects endogenous levels of CDH20 protein.

DATA:



Western blot (WB) analysis of CDH20 polyclonal antibody at 1:500 dilution

Lane1:Hela whole cell lysate(40µg)

Lane2:The Liver tissue lysate of Rat(40µg)

Lane3:The Liver tissue lysate of Mouse (40µg)

Note:

For research use only, not for use in diagnostic procedure.

Bioworld Technology, Inc.

Add: 1660 South Highway 100, Suite 500 St. Louis Park, MN 55416, USA.

Email: info@bioworld.com

Tel: 6123263284

Fax: 6122933841

Bioworld technology, co. Ltd.

Add: No 9, weidi road Qixia District Nanjing, 210046, P. R. China.

Email: info@biogot.com

Tel: 0086-025-68037686

Fax: 0086-025-68035151