

## STEAP2 polyclonal antibody

Catalog: BS61401

Host: Rabbit

Reactivity: Human, Mouse, Rat

### BackGround:

STEAP2 (six transmembrane epithelial antigen of the prostate 2), also known as STMP, IPCA1, PUMPCn, STAMP1 or PCANAP1, is a 490 amino acid multi-pass membrane protein that localizes to the cell membrane and the endosomal membrane, as well as to the Golgi and to vesicular tubular structures in the cytosol. Highly expressed in prostate and present at lower levels in kidney, heart, ovary, brain and pancreas, STEAP2 contains one ferric oxidoreductase domain and, using FAD as a cofactor, functions as a metalloredoxase that is able to reduce both Cu(2+) and Fe(3+) to Cu(1+) and Fe(2+), respectively, thereby playing a role in iron and copper metabolism. Overexpression of STEAP2 is associated with the progression of prostate cancer, suggesting a role for STEAP2 in tumorigenesis. Multiple isoforms of STEAP2 exist due to alternative splicing events.

### Product:

1 mg/ml in Phosphate buffered saline (PBS) with 0.05% sodium azide, approx. pH 7.3.

### Molecular Weight:

~ 56 kDa

### Swiss-Prot:

Q8NFT2

### Purification&Purity:

The antibody was affinity-purified from rabbit antiserum by affinity-chromatography using epitope-specific immunogen and the purity is > 95% (by SDS-PAGE).

### Applications:

WB: 1:500~1:1000

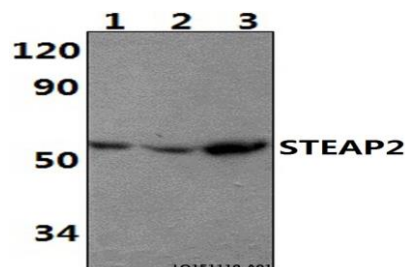
### Storage&Stability:

Store at 4 °C short term. Aliquot and store at -20 °C long term. Avoid freeze-thaw cycles.

### Specificity:

STEAP2 polyclonal antibody detects endogenous levels of STEAP2 protein.

### DATA:



Western blot (WB) analysis of STEAP2 polyclonal antibody at 1:500 dilution

Lane1: HEH293T whole cell lysate (40ug)

Lane2: The Spleen tissue lysate of Rat (30ug)

Lane3: The Spleen tissue lysate of Mouse (30ug)

### Note:

For research use only, not for use in diagnostic procedure.

### Bioworld Technology, Inc.

Add: 1660 South Highway 100, Suite 500 St. Louis Park, MN 55416, USA.

Email: [info@bioworld.com](mailto:info@bioworld.com)

Tel: 6123263284

Fax: 6122933841

### Bioworld technology, co. Ltd.

Add: No 9, weidi road Qixia District Nanjing, 210046, P. R. China.

Email: [info@biogot.com](mailto:info@biogot.com)

Tel: 0086-025-68037686

Fax: 0086-025-68035151