

SRSF5 polyclonal antibody

Catalog: BS61390

Host: Rabbit

Reactivity: Human, Mouse, Rat

BackGround:

Pre-mRNA splicing enhancer elements are short RNA sequences capable of activating weak splice sites in nearby introns that are required for accurate splice site recognition and the control of alternative splicing. Splicing enhancer elements contain specific binding sites for serine/arginine (SR)-rich splicing factors, which include SC35, 9G8, SRp20, and SF2/ASF. The family of SR factors all contain one or more RNA recognition motifs (RRM) and an arginine/serine (RS)-rich domain. They are not only essential for constitutive splicing but also regulate splicing in a concentration-dependent manner by influencing the selection of alternative splice sites. The majority of SR proteins, including SC35 and SRp40, are confined to the nucleus, while SF2/ASF, SRp20, and 9G8 are continuously shuttled between the nucleus and the cytoplasm and contribute to mRNA transport. The activity of SR proteins in regulated splicing is antagonized by members of the hnRNP A/B family of proteins, which induce drastic shifts in the selection of splicing sites. An additional SR-associated protein, p32, tightly associates with SR factors and preferentially inhibits ASF/SF2 functioning as both a splicing enhancer and splicing repressor protein by preventing the stable interaction of ASF/SF2 and RNA.

Product:

1 mg/ml in Phosphate buffered saline (PBS) with 0.05% sodium azide, approx. pH 7.3.

Molecular Weight:

~ 91 kDa

Swiss-Prot:

Q13243

Purification&Purity:

The antibody was affinity-purified from rabbit antiserum by affinity-chromatography using epitope-specific immunogen and the purity is > 95% (by SDS-PAGE).

Applications:

WB: 1:500~1:1000

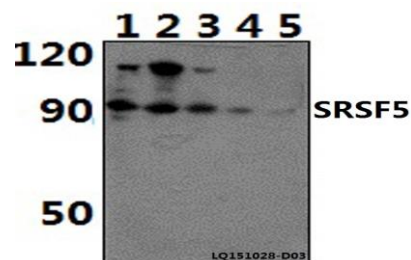
Storage&Stability:

Store at 4 °C short term. Aliquot and store at -20 °C long term. Avoid freeze-thaw cycles.

Specificity:

SRSF5 polyclonal antibody detects endogenous levels of SRSF5 protein.

DATA:



Western blot (WB) analysis of SRSF5 polyclonal antibody at 1:500 dilution

Lane1:RAW264.7 whole cell lysate(40ug)

Lane2:Hela whole cell lysate(40ug)

Lane3:H9C2 whole cell lysate(40ug)

Lane4:NIH-3T3 whole cell lysate(40ug)

Lane5:HEK293T whole cell lysate(40ug)

Note:

For research use only, not for use in diagnostic procedure.

Bioworld Technology, Inc.

Add: 1660 South Highway 100, Suite 500 St. Louis Park, MN 55416, USA.

Email: info@bioworld.com

Tel: 6123263284

Fax: 6122933841

Bioworld technology, co. Ltd.

Add: No 9, weidi road Qixia District Nanjing, 210046, P. R. China.

Email: info@biogol.com

Tel: 0086-025-68037686

Fax: 0086-025-68035151