

## LHX1 polyclonal antibody

Catalog: BS61324

Host: Rabbit

Reactivity: Human, Mouse, Rat

### BackGround:

During development, genetically distinct subtypes of motor neurons express unique combinations of LIM-type homeodomain factors, which regulate cell migration and guide motor axons to establish the fidelity of a binary choice in axonal trajectory. The LIM gene family encodes a set of gene products, which carry the LIM domain, a unique cysteine-rich zinc-binding domain. At least 40 members of this family have been identified in vertebrates and invertebrates, and are distributed into 4 groups according to the number of LIM domains and to the presence of homeodomains and kinase domains. The overlapping expression of LHX1, LHX3, LHX4, Isl-1 and Isl-2 in developing motoneurons along the spinal column may influence the establishment of specific motoneuron subtypes. The human LHX1 gene maps to chromosome 11p13-p12 and encodes a 384 amino acid protein. The human LHX1 transcript is assembled from five exons, which are separated by introns ranging in size from 93 nt to 2.3 kb. The two LIM domains are entirely contained in the first and second exons, respectively, while the homeodomain is split into exons three and four.

### Product:

1 mg/ml in Phosphate buffered saline (PBS) with 0.05% sodium azide, approx. pH 7.8.

### Molecular Weight:

~ 45 kDa

### Swiss-Prot:

P48742

### Purification&Purity:

The antibody was affinity-purified from rabbit antiserum by affinity-chromatography using epitope-specific immunogen and the purity is > 95% (by SDS-PAGE).

### Applications:

WB: 1:500~1:1000

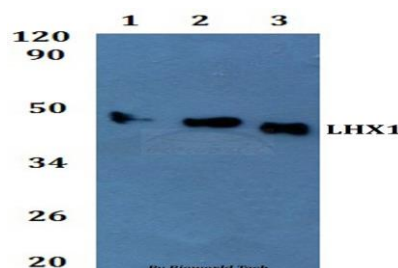
### Storage&Stability:

Store at 4 °C short term. Aliquot and store at -25 °C long term. Avoid freeze-thaw cycles.

### Specificity:

LHX1 polyclonal antibody detects endogenous levels of LHX1 protein.

### DATA:



Western blot (WB) analysis of LHX1 polyclonal antibody at 1:500 dilution

Line1: Raw264.7 whole cell lysate

Line2: LO2 whole cell lysate

Line3: The Liver tissue lysate of Rat

### Note:

For research use only, not for use in diagnostic procedure.

### Bioworld Technology, Inc.

Add: 1660 South Highway 100, Suite 500 St. Louis Park, MN 55416, USA.

Email: [info@bioworld.com](mailto:info@bioworld.com)

Tel: 6123263284

Fax: 6122933841

### Bioworld technology, co. Ltd.

Add: No 9, weidi road Qixia District Nanjing, 210046, P. R. China.

Email: [info@biogot.com](mailto:info@biogot.com)

Tel: 0086-025-68037686

Fax: 0086-025-68035151