

## SCN-pan polyclonal antibody

Catalog: BS61289

Host: Rabbit

Reactivity: Human, Mouse, Rat

### BackGround:

Voltage-gated sodium channels are selective ion channels that regulate the permeability of sodium ions in excitable cells. During the propagation of an action potential, sodium channels allow an influx of sodium ions, which rapidly depolarize the cell. The three glycoproteins that comprise the voltage-gated sodium channel proteins include a pore-forming  $\alpha$  subunit, a noncovalently associated  $\beta 1$  subunit and a disulfide-linked  $\beta 2$  subunit. The two  $\beta$  subunits regulate the level of channel expression, modulate gating and function as cell adhesion molecules for cellular aggregation and cytoskeleton interaction. The  $\alpha$  subunits of sodium channels type I and III are predominantly expressed in neuronal cell bodies and proximal processes, while type II $\alpha$  subunits are more abundant along axons. The  $\beta 1$  subunit of sodium channel type I is expressed in brain, skeletal and cardiac muscle. In the brain,  $\beta 1$  and  $\beta 2$  are highly expressed in Purkinje cells, and  $\beta 1$  is also expressed in the pyramidal cells of the deep cerebellar nuclei. Impaired voltage-gated sodium channels lead to a number of diseases including myotonia.

### Product:

1 mg/ml in Phosphate buffered saline (PBS) with 0.05% sodium azide, approx. pH 7.3.

### Molecular Weight:

~ 229 kDa

### Swiss-Prot:

P35498

### Purification&Purity:

The antibody was affinity-purified from rabbit antiserum by affinity-chromatography using epitope-specific immunogen and the purity is > 95% (by SDS-PAGE).

### Applications:

WB: 1:500~1:1000

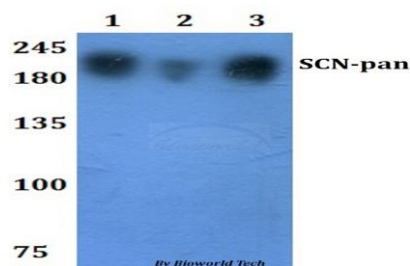
### Storage&Stability:

Store at 4 °C short term. Aliquot and store at -20 °C long term. Avoid freeze-thaw cycles.

### Specificity:

SCN-pan polyclonal antibody detects endogenous levels of SCN-pan protein.

### DATA:



Western blot (WB) analysis of SCN-pan polyclonal antibody at 1:500 dilution Lane1:HEK293T whole cell lysate

Lane2:RAW264.7 whole cell lysate Lane3:H9C2 whole cell lysate

### Note:

For research use only, not for use in diagnostic procedure.

### Bioworld Technology, Inc.

Add: 1660 South Highway 100, Suite 500 St. Louis Park, MN 55416, USA.

Email: [info@bioworld.com](mailto:info@bioworld.com)

Tel: 6123263284

Fax: 6122933841

### Bioworld technology, co. Ltd.

Add: No 9, weidi road Qixia District Nanjing, 210046, P. R. China.

Email: [info@biogot.com](mailto:info@biogot.com)

Tel: 0086-025-68037686

Fax: 0086-025-68035151