

## PXMP2 polyclonal antibody

Catalog: BS61233

Host: Rabbit

Reactivity: Human, Rat

### BackGround:

Peroxisomes are subcellular organelles with important functions in lipid metabolism that are found in virtually all eucaryotic cells. The peroxisomal membrane contains a number of integral and peripheral membrane proteins involved in the import of peroxisomal matrix proteins and the transport of metabolites across the membrane. Pxmp2 (Peroxisomal membrane protein 2), also known as PMP22, is a 195 amino acid multi-pass membrane protein that belongs to the peroxisomal membrane protein PXMP2/4 family. The Pxmp2 protein interacts with both Peroxin 19 and Siva proteins. The Peroxin 19 protein binds multiple peroxisomal membrane proteins (PMPs), is predominantly cytoplasmic, and is required for peroxisome membrane synthesis. Pxmp2 is the most abundant peroxisomal membrane protein in higher eukaryotes. Pxmp2's expression is tissue-specific with highest levels of expression in liver, kidney and heart tissue. It has been suggested that Pxmp2 is involved in pore-forming activity and may contribute to the broad permeability of the peroxisomal membrane. Disruption of the mouse Pxmp2 gene leads to partial restriction of peroxisomal membrane permeability to solutes in vitro and in vivo. The Pxmp2 gene is conserved in chimpanzee, dog, cow, mouse, rat, zebrafish, fruit fly and mosquito, and maps to human chromosome 12q24.33.

### Product:

1 mg/ml in Phosphate buffered saline (PBS) with 0.05% sodium azide, approx. pH 7.3.

### Molecular Weight:

~ 22 kDa

### Swiss-Prot:

Q9NR77

### Purification&Purity:

The antibody was affinity-purified from rabbit antiserum by affinity-chromatography using epitope-specific immunogen and the purity is > 95% (by SDS-PAGE).

### Applications:

WB: 1:500~1:1000

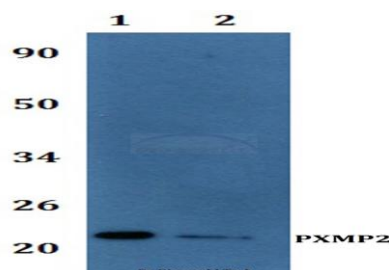
### Storage&Stability:

Store at 4 °C short term. Aliquot and store at -20 °C long term. Avoid freeze-thaw cycles.

### Specificity:

PXMP2 polyclonal antibody detects endogenous levels of PXMP2 protein.

### DATA:



Western blot (WB) analysis of PXMP2 polyclonal antibody at 1:500 dilution

Line1:A549 whole cell lysate

Line2:PC12 whole cell lysate

### Note:

For research use only, not for use in diagnostic procedure.

### Bioworld Technology, Inc.

Add: 1660 South Highway 100, Suite 500 St. Louis Park, MN 55416, USA.

Email: [info@bioworld.com](mailto:info@bioworld.com)

Tel: 6123263284

Fax: 6122933841

### Bioworld technology, co. Ltd.

Add: No 9, weidi road Qixia District Nanjing, 210046, P. R. China.

Email: [info@biogot.com](mailto:info@biogot.com)

Tel: 0086-025-68037686

Fax: 0086-025-68035151