

## NOM1 polyclonal antibody

Catalog: BS61227

Host: Rabbit

Reactivity: Human, Rat

### BackGround:

NOM1 (nucleolar protein with MIF4G domain 1), also known as SGD1, is an 860 amino acid protein that localizes to the nucleolus, where it plays a role in targeting PP1. A member of the CWC22 family, NOM1 is expressed in skeletal muscle and heart, and contains one MI domain and a MIF4G domain. The MIF4G typically functions in protein translation and may act as a binding site for members of the eIF4A family. As such, NOM1 is thought to interact with eIF4AI, eIF4AII and eIF4AIII. The gene encoding NOM1 maps to human chromosome 7, which houses over 1,000 genes, comprises nearly 5% of the human genome and has been linked to Osteogenesis imperfecta, Pendred syndrome, Lissencephaly, Citrullinemia and Shwachman-Diamond syndrome.

### Product:

1 mg/ml in Phosphate buffered saline (PBS) with 0.05% sodium azide, approx. pH 7.3.

### Molecular Weight:

~ 96 kDa

### Swiss-Prot:

Q5C9Z4

### Purification&Purity:

The antibody was affinity-purified from rabbit antiserum by affinity-chromatography using epitope-specific im-

munogen and the purity is > 95% (by SDS-PAGE).

### Applications:

WB: 1:500~1:1000

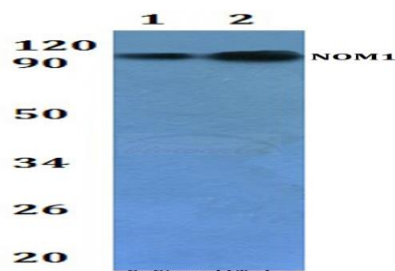
### Storage&Stability:

Store at 4 °C short term. Aliquot and store at -20 °C long term. Avoid freeze-thaw cycles.

### Specificity:

NOM1 polyclonal antibody detects endogenous levels of NOM1 protein.

### DATA:



Western blot (WB) analysis of NOM1 polyclonal antibody at 1:500 dilution. Lane1: HEK293T whole cell lysate. Lane2: H9C2 whole cell lysate.

### Note:

For research use only, not for use in diagnostic procedure.

### Bioworld Technology, Inc.

Add: 1660 South Highway 100, Suite 500 St. Louis Park, MN 55416, USA.

Email: [info@bioworld.com](mailto:info@bioworld.com)

Tel: 6123263284

Fax: 6122933841

### Bioworld technology, co. Ltd.

Add: No 9, weidi road Qixia District Nanjing, 210046, P. R. China.

Email: [info@biogot.com](mailto:info@biogot.com)

Tel: 0086-025-68037686

Fax: 0086-025-68035151