

MBTPS2 polyclonal antibody

Catalog: BS61210

Host: Rabbit

Reactivity: Human, Mouse

BackGround:

The transcription factors SREBPs (sterol regulatory element binding proteins) span the ER membrane and, in response to sterol depletion, the N-terminal domain of SREBPs are proteolytically activated, released from the membrane and then translocate to the nucleus where they induce the expression of genes regulating cholesterol metabolism. This proteolytic activation requires the sequential cleavage of SREBPs at Site-1, within the lumen of the ER, followed by cleavage at Site-2, within the first transmembrane domain. The cleavage at Site-1 separates the N-terminal and C-terminal domains of the protein and it requires the serine protease, S1P (Site-1 protease). Site-2 is subsequently processed by a putative zinc metalloprotease S2P, which releases the activated N-terminal domain for nuclear translocation. This proteolytic pathway is tightly regulated by sterol levels and is under the control of SCAP (SREBP cleavage-activating protein). SCAP, a sterol sensor, is latently bound to the C-terminal regulatory domains of the SREBPs, and it regulates cleavage of SREBPs at Site-1. Sterol levels influence the activity of SCAP, as SCAP is activated only in sterol-depleted cells and it inhibited by sterol accumulation.

Product:

1 mg/ml in Phosphate buffered saline (PBS) with 0.05% sodium azide, approx. pH 7.3.

Molecular Weight:

~ 57 kDa

Swiss-Prot:

O43462

Purification&Purity:

The antibody was affinity-purified from rabbit antiserum by affinity-chromatography using epitope-specific immunogen and the purity is > 95% (by SDS-PAGE).

Applications:

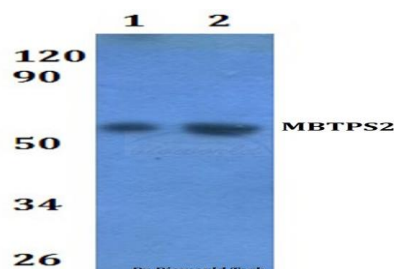
WB: 1:500~1:1000

Storage&Stability:

Store at 4 °C short term. Aliquot and store at -20 °C long term. Avoid freeze-thaw cycles.

Specificity:

MBTPS2 polyclonal antibody detects endogenous levels of MBTPS2 protein.

DATA:

Western blot (WB) analysis of MBTPS2 polyclonal antibody at 1:500 dilution Lane1:HEK293T whole cell lysate
Lane2:RAW264.7 whole cell lysate

Note:

For research use only, not for use in diagnostic procedure.

Bioworld Technology, Inc.

Add: 1660 South Highway 100, Suite 500 St. Louis Park, MN 55416, USA.

Email: info@bioworld.com

Tel: 6123263284

Fax: 6122933841

Bioworld technology, co. Ltd.

Add: No 9, weidi road Qixia District Nanjing, 210046, P. R. China.

Email: info@biogot.com

Tel: 0086-025-68037686

Fax: 0086-025-68035151