

CSTL1 polyclonal antibody

Catalog: BS61166

Host: Rabbit

Reactivity: Human, Rat

BackGround:

The cystatin superfamily is a well-established family of cysteine protease inhibitors. All true cystatins inhibit cysteine peptidases of the papain family, such as cathepsins, while some also inhibit legumain family enzymes. The CRES (cystatin-related epididymal spermatogenic) protein defines a new subgroup in the family 2 cystatins of the cystatin superfamily. CRES proteins lack two of the three consensus sites necessary for the cystatin inhibition of C1 cysteine proteases. They are also preferentially expressed in postmeiotic germ cells, the proximal caput epididymidis, and anterior pituitary gonadotrophs. Therefore, CRES proteins may perform unique and tissue-specific functions in the reproductive and neuroendocrine systems. As a member of the CRES subfamily, Cystatin-like 1 (CSTL1) is a 145 amino acid protein and is expressed in testis.

Product:

1 mg/ml in Phosphate buffered saline (PBS) with 0.05% sodium azide, approx. pH 7.3.

Molecular Weight:

~ 17 kDa

Swiss-Prot:

Q9H114

Purification&Purity:

The antibody was affinity-purified from rabbit antiserum by affinity-chromatography using epitope-specific im-

munogen and the purity is > 95% (by SDS-PAGE).

Applications:

WB: 1:500~1:1000

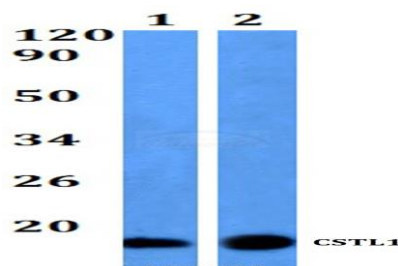
Storage&Stability:

Store at 4 °C short term. Aliquot and store at -20 °C long term. Avoid freeze-thaw cycles.

Specificity:

CSTL1 polyclonal antibody detects endogenous levels of CSTL1 protein.

DATA:



Western blot (WB) analysis of CSTL1 polyclonal antibody at 1:500 dilution

Lane1:Hela whole cell lysate

Lane2:PC12 whole cell lysate

Note:

For research use only, not for use in diagnostic procedure.

Bioworld Technology, Inc.

Add: 1660 South Highway 100, Suite 500 St. Louis Park, MN 55416, USA.

Email: info@bioworld.com

Tel: 6123263284

Fax: 6122933841

Bioworld technology, co. Ltd.

Add: No 9, weidi road Qixia District Nanjing, 210046, P. R. China.

Email: info@biogot.com

Tel: 0086-025-68037686

Fax: 0086-025-68035151